

## Early Years, SEND and Childcare Briefing 16 April 2026

Dear Provider,

Welcome to the Early Years, SEND and Childcare briefing delivered to you on a fortnightly basis. This briefing contains information on [Safe sleep online training, 2026/2027 early years inclusion funding dates](#), [baby room vision-building briefing](#) and details of [BFfC Wraparound Inclusion & Backfill Training Bursary](#).

### **Safeguarding**

#### **Domestic abuse in pregnancy**

NSPCC Learning has published a series of expert insight [videos](#) on domestic abuse in pregnancy. The four videos include practitioner insights on the risk of domestic abuse in pregnancy, the impact on unborn children and families, and how professionals can spot the signs and respond effectively.

#### **PANTS resources**

NSPCC Learning has published a new series of [Talk PANTS](#) videos. Talk PANTS is an NSPCC campaign to keep children safe from sexual abuse and includes a range of resources to help teachers, schools and early years settings deliver age-appropriate sessions with children.

#### **Safe Sleep Online Training**

Multiagency training aimed at any practitioner or volunteers who works with families, including Social Workers or other social care staff, Foster Carers, Early Years, Childminders, Police, Ambulance, Mental Health, Substance Misuse, GPs, and Practice Nurses. Everyone is welcome to attend!

It is an hour's session facilitated on MS Teams and will provide an overview of why Safe Sleep is everyone's business, the evidence, the facts and how to support families, including useful resources.

Available dates:

- Friday 24 April 12.30-1.30pm
- Thursday 21 May 9.30-10.30am
- Wednesday 17 June 1-2pm

Book by emailing: [Frimleyicb.safeguarding@nhs.net](mailto:Frimleyicb.safeguarding@nhs.net)

#### **Prevent in Education: Training for Early Years Staff**

This training package has been designed by DfE for staff within the early years to understand their responsibilities and the importance of the Prevent duty.

[Wednesday 29 April, 4-5.15pm](#)

[Tuesday 16 June, 6-7.15pm](#)

#### **BFfC training and network offer:**

- **Designated Safeguarding Leads and Officer Network - Free**  
30 April 2026, 2.30-4.30pm, Civic Offices  
Book via [email](#) or the [SLA](#)

## Leadership

If you want to contact the team directly for more information about how to use the content in your service, please use the email [CBeebiesparenting@bbc.co.uk](mailto:CBeebiesparenting@bbc.co.uk).

## Mental health and wellbeing

### BFFC training and network offer:

- **Trauma Virtual Reality Programme – FREE**

22 April, 7-9pm, Civic Offices

The programme is designed to enable users to understand the impact of trauma, abuse and neglect through the eyes of the child from prebirth to adolescence to improve the care, support and guidance that children and young people are provided with.

**Please note: the films are not designed to be easy viewing & some may find difficult to watch.**

Book via [email](#).

## EYFS and Beyond

### Early Years Inclusion Funding Panel Dates 2026-2027

| <b>Deadline for requests to be submitted</b> | <b>Date of EYIF panel</b> |
|--|---------------------------|
| 21 April 2026                                | 28 April 2026             |
| 9 June 2026                                  | 16 June 2026              |
| 15 September 2026                            | 22 September 2026         |
| 3 November 2026                              | 10 November 2026          |
| 12 January 2027                              | 19 January 2027           |
| 23 February 2027                             | 2 March 2027              |

Further information and copies of the application form can be found [here](#).

Please submit all requests for EYIF to [earlyyearsSEND@reading.gov.uk](mailto:earlyyearsSEND@reading.gov.uk)

### New Starting School Home Learning Education Programme

Our new Home Learning Education Programme is going live next week! If you have any families who you feel would benefit from enhanced home visits to support their child's development before starting school in September 2026 or 2027 please (with parents permission) complete the online professional referral form found on our transitions hub: [Under 5s transition to nursery or school - Brighter Futures For Children](#)

### National Offer Day – 16 April

Don't forget about our professionals Transitions Hub with lots of useful information to support transitions. There will be an updated Transitions Charter which sets out expectations for all based upon agreed best practiced locally: [Under 5s transition to nursery or school - Brighter Futures For Children](#)

### Non-statutory guidance – Birth to 5 matters update

The first draft of the revised guidance is available for you to read [here](#). The Early Years Coalition are inviting feedback from the sector, through completion of this [Consultation Survey](#) - open until **20 April 2026**.

[Birth To 5 Matters – Guidance by the sector, for the sector](#)

### Baby Room Vision-Building briefing

[This briefing](#) details the results of a study involving Baby Room educators and Nursery Managers, focusing on 'The ideal baby room'. The study involved capturing participants' vision for the baby room, exploring what an ideal baby room looks and feels like, how the baby room fits into the wider nursery, and the baby room team. To continue the process of vision-building with your own team, here are some free vision-building resources, linked here: <https://thebabyroom.blog/baby-room-vision-building-resource/>

### Wraparound & Holiday Activity Learning Workshops

We are delighted to invite practitioners to a 2-hour in-person training workshop focused on enhancing the delivery of high-quality Wraparound and Holiday Childcare. This outdoor physical workshop is designed to develop practitioners' confidence and skills in delivering both indoor and outdoor group games.

The workshop aims to:

- Develop practical skills
- Build a toolbox of engaging activities
- Improve quality
- Empower
- Network with fellow providers



**Date:** Wednesday 3 June



**Location:** The Ranger Station, Prospect Park, Reading, RG30 2ND



**Time:** 9.30-11.30am

You can [Book Here](#) or [email](#) to book your place!

### Families First Wraparound: The missing jigsaw piece in the proposed SEND reforms?

Families First are running a live session specifically for wraparound providers. The aim of this session is to support as many settings as possible to respond to the government consultation and ensure the wraparound sector has a strong voice in proposed changes.

This is a free event and open event happening **Thursday 30 April, 6.30–7.30pm** via **Zoom**. [Please click here for the meeting link](#)

Hosted by Families First. Please contact [info@familiesfirst.org.uk](mailto:info@familiesfirst.org.uk) for any questions or if you have difficulty accessing the link.

Please see the attached flyer for full details.

## BfC Wraparound Inclusion & Backfill Training Bursary – Exciting details coming soon!

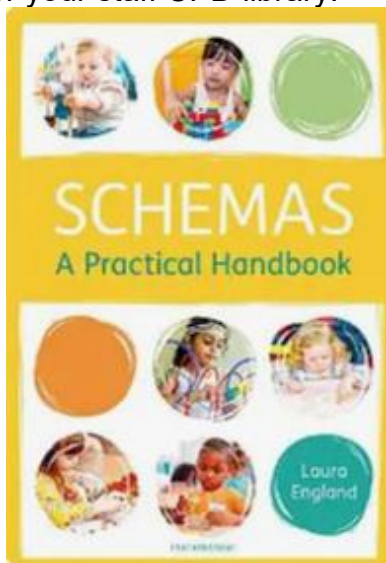
- Backfill Bursaries: Funding available for staff training in Families First SEND qualifications.
- Resource Grants: Available after training to support your inclusion equipment needs.
- Gold Standard: Commit to excellence by adopting the National Inclusion Standard (NIS).

## National Year of Reading

One for your children to encourage engagement and anticipation:



Two for your staff CPD library:



## BfC training and network offer:

- **Business Planning for Success – Free Training for Wraparound Providers**  
Tuesday 21 April, 9.30–11.30am, Online  
(A follow up reflective session will also take place on Wednesday 6 May, 9.30–11.30am for all attendees)  
Register via Families First: [Registration for Business Support Sessions](#) or on the [SLA](#).
- **Introduction to Intensive Interaction Two Part Workshop**  
22 April & 13 May 3.30-5pm, Teams

[Email](#) to book your place

- **Senco Coffee drop in - Having Difficult Conversations with Parents**  
27 April, 2.30-4.30pm. Civic Offices

[Email](#) to book your place

## Specialist Advisory Support

### Early Years and Childcare Advisory Support

Book dedicated time with a member of our Early Years and Childcare team between your scheduled partnership visits.

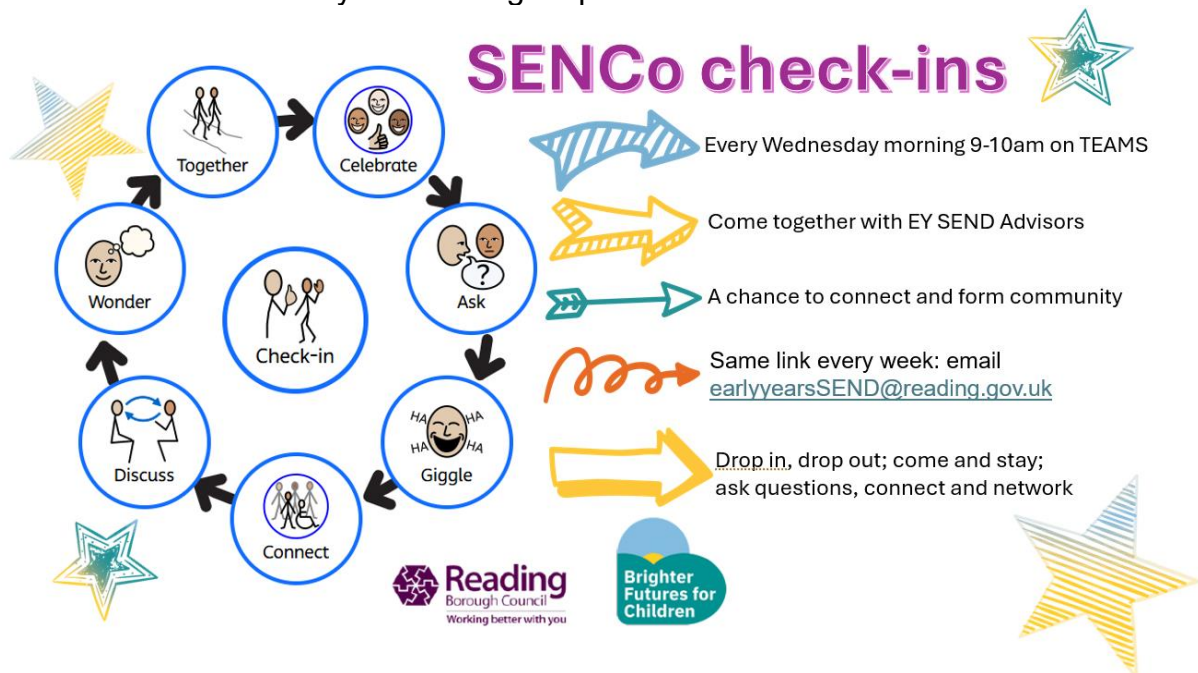
This is your opportunity to tap into tailored advisory support designed to help you. Whether you want to strengthen your business planning, boost your leadership confidence, or streamline your day-to-day operations, we're here to help. [Request a slot.](#)

### SALT Surgery

SALT Surgeries are held on the third Thursday of the month. [Book a slot.](#)

### SEND Advisory Support

Please use [this form](#) to request an EY SEND advisory Surgery slot where a member of the team will contact you to arrange a phone call/TEAMS call.



[Early Years SENCO Weekly Coffee Morning | Meeting-Join | Microsoft Teams](#)

**Symbol and Makaton sign of the month**



## Best Start in Life

### Best Start in Life Reading Family Hubs – Now Open!

Family Hubs provide a wide range of services by connecting families with their community and local support networks. You can view the full timetable of Hub activities here. [Reading Directory | Best Start in Life Reading Family Hubs](#)

### Best Start in Life Parent Hub

This online resource provides parents and carers with trusted information, practical guidance, and support to help children thrive from pregnancy through the early years. Directing families to this site will ensure they can easily access high quality advice and local services tailored to their needs [Best Start in Life - Best Start in Life](#)

## Local News

### SEND Local Offer Spring Newsletter

The [40th issue of the SEND Local Offer newsletter](#) is out now! It is a packed edition with lots of information, including blogs, news items, support services, SEND activities and short breaks, update on Best Start in Life Family Hubs and much more.

### Berkshire Early Years Music Network

Berkshire Music Trust have several FREE training sessions running this term for Early Years practitioners – [register for free](#) to join the network & keep up to date with Early years music opportunities.

## Compliments/Celebrations

### Well done to Paula Wylie for achieving the Level 1 Inclusion Award!

Paula demonstrated clearly and confidently the approach she takes to support inclusion in her home setting. It was evident that the relationships she builds with parents/setting and other professionals are a real strength. Well done!

The Inclusion Award is an outstanding achievement that settings can receive once they have demonstrated they are an inclusive setting to all children including those with additional needs.

### Your contributions

Is there something you are particularly proud of that has been achieved by staff or the children in your setting? Do you have a team member that is celebrating long service or achieved a new qualification that deserves a shout out? Please share these with us so that we can share your news with the sector!!

Email: [earlyyears@reading.gov.uk](mailto:earlyyears@reading.gov.uk).

Previous updates can be found on our [website](#).

Kind regards

**Early Years, Childcare and SEND Team | Directorate of Children's Services**

Reading Borough Council  
Civic Offices  
Bridge Street  
Reading  
RG1 2LU

[earlyyears@reading.gov.uk](mailto:earlyyears@reading.gov.uk)

[Website](#) | [Facebook](#) | [Twitter](#) | [YouTube](#) | [Instagram](#) | [LinkedIn](#)

