



Reading Portage Service Guide

An explanation of the Reading portage
service for staff and professionals

This is a service registered with the
National Portage Association. The portage service
covers the whole of the Reading borough.

What is the portage service?

The portage service is a support service for pre-school children who have additional support needs, and their families. It is based on the principle that parents are the key figures in the care and development of their child.

The scheme was developed in Portage, Wisconsin, USA in 1969 and introduced into the UK in 1976. The National Portage Association (NPA) was founded in 1983. The Reading service is an accredited member of the NPA.

Portage helps families to recognise their child's progress and celebrate their success, through a planned and structured teaching programme.

Together, the family and the portage worker find fun ways to encourage a child's development.

How can portage help families?

Families who receive the portage service are invited to attend portage groups or visited regularly in their home by a trained portage visitor who offers support, encouragement and advice through a home teaching programme.



The portage team will work with families to:

- encourage children's social interaction with their peers and adults
- include children in early years activities outside of the home
- agree learning and development goals for children
- build on each child's individual strengths and identify next steps for their development
- support multi-agency liaison
- support transition into nursery or school.



Portage is suitable if:

- the child is of pre-school age and has at least two terms before entering school or a maintained school nursery class
- the child has a significant delay in two or more areas of their development
- parents are able to attend portage groups and/or meet with a portage home visitor at an agreed time and on a regular basis.



Who can refer?

Requests for portage home support can come directly from parents and carers. Professionals refer (with parental consent) through the [Children's Single Point of Access](#). Parents can refer by contacting the Reading portage team or visit servicesguide.reading.gov.uk stating that it is a portage referral.

The Reading portage service is part of Brighter Futures for Children's under 5s services.

The portage team consists of:

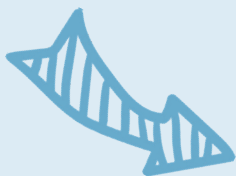
- under 5s service manager
- early years SEND team manager
- senior portage worker
- portage workers



Contact details

Reading Portage Service
268 Northumberland Avenue
Reading RG2 8JP
0118 937 2089
07515 629094

Scan the QR code for our under 5s with SEND page, including portage information and links.



For the National Portage Association, visit:
www.portage.org.uk

The National Portage Association
registered charity number: 1087865



