



Reading
Borough Council
Working better with you



**Primary Schools Designated Areas (Catchments) for
Primary, Infant and Junior Schools in Reading for the
2025/2026 academic year.**

For September 2025 entry

Determined on 17 January

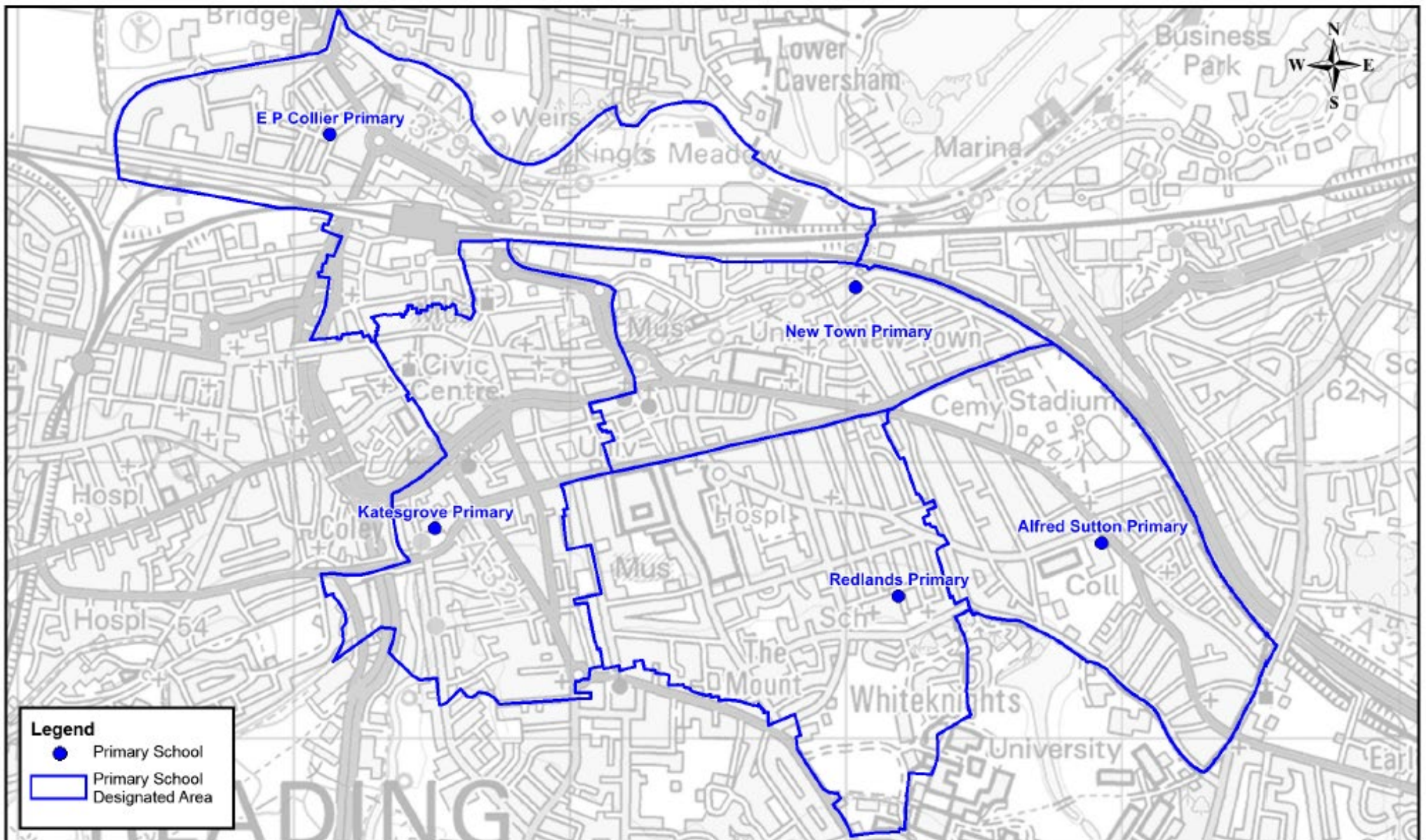
2024

The maps on the following pages show the primary school catchment areas. It includes catchments for Reading Borough Council maintained and other state maintained schools.

Please note, not all schools have a catchment area.

Some areas do not have a catchment school due to schools removing the catchment criteria from their policy.

The maps do not include parish catchments for schools. A parish catchment is an address which falls in the area of an ecclesiastical parish church.



**Title: Primary Schools Designated Areas
Central and East Reading**

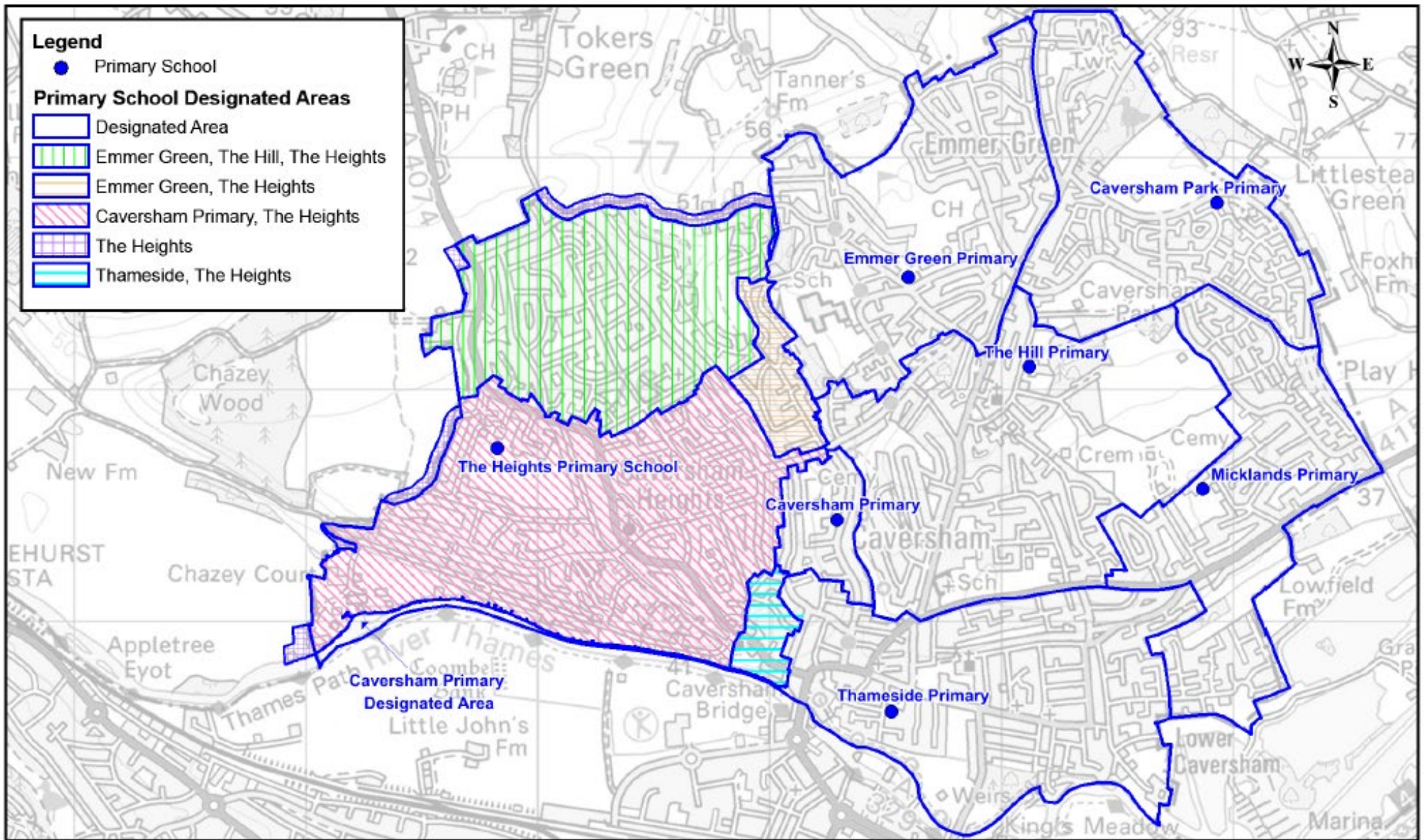
Drg.No.: GIS00015

Date: 09/08/2018 Scale at A4: 1:18500

Produced by GIS & Mapping Services

Ref:7223 - G:\Mapinfo\Data\Client datasets\Education & Community\School Admissions\updated primary schools\designated areas maps





Title: Primary Schools Designated Areas
North Reading

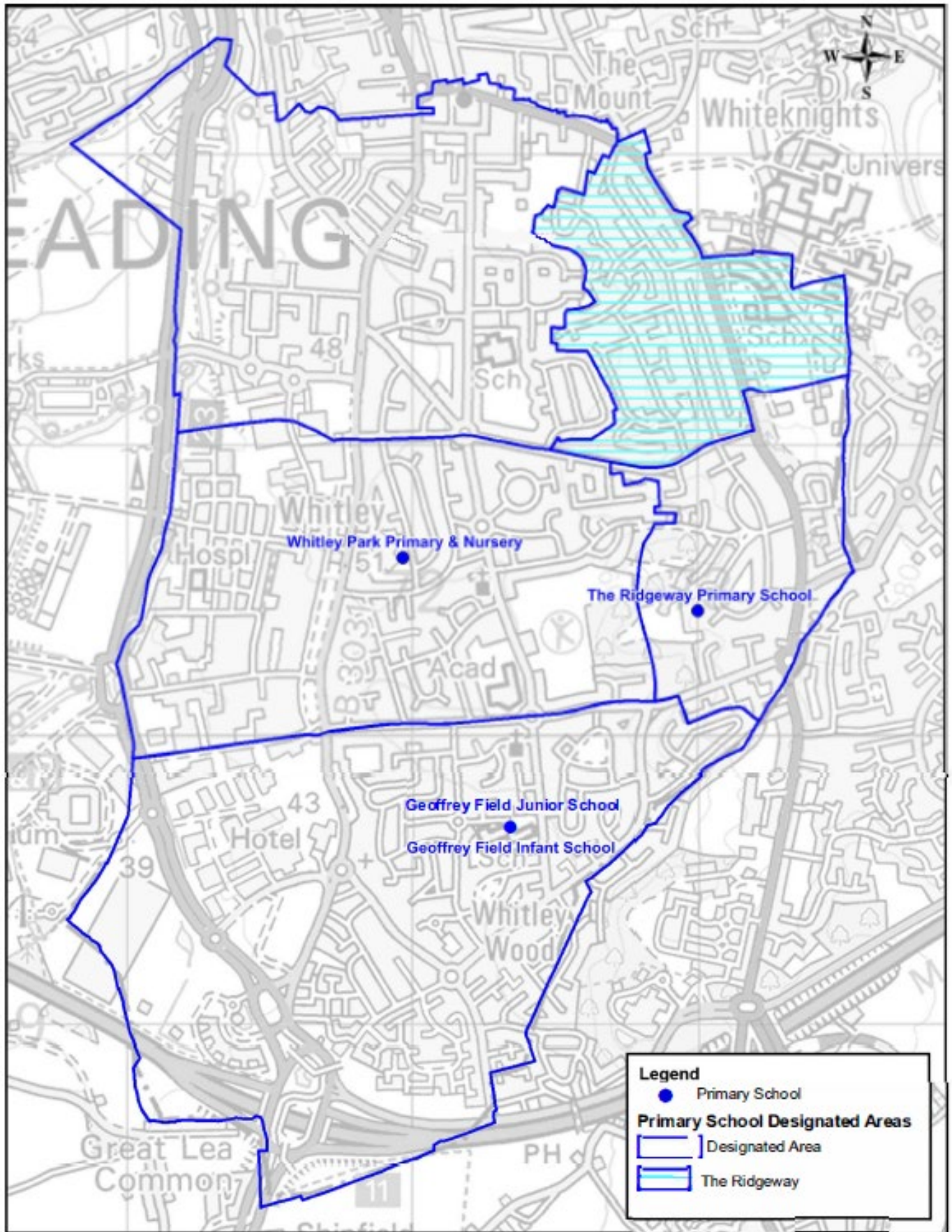
Drg.No.: GIS00012

Date: 27/07/2020 Scale at A4: 1:22,000

Produced by GIS & Mapping Services

Ref: G:\MID\CD\Ed&Comm\School Admissions\updated primary schools\designated areas maps





Title: **Primary Schools Designated Areas**
South Reading

Drg.No.: GIS00013

Produced by GIS & Mapping Services

Date: 09/08/2018

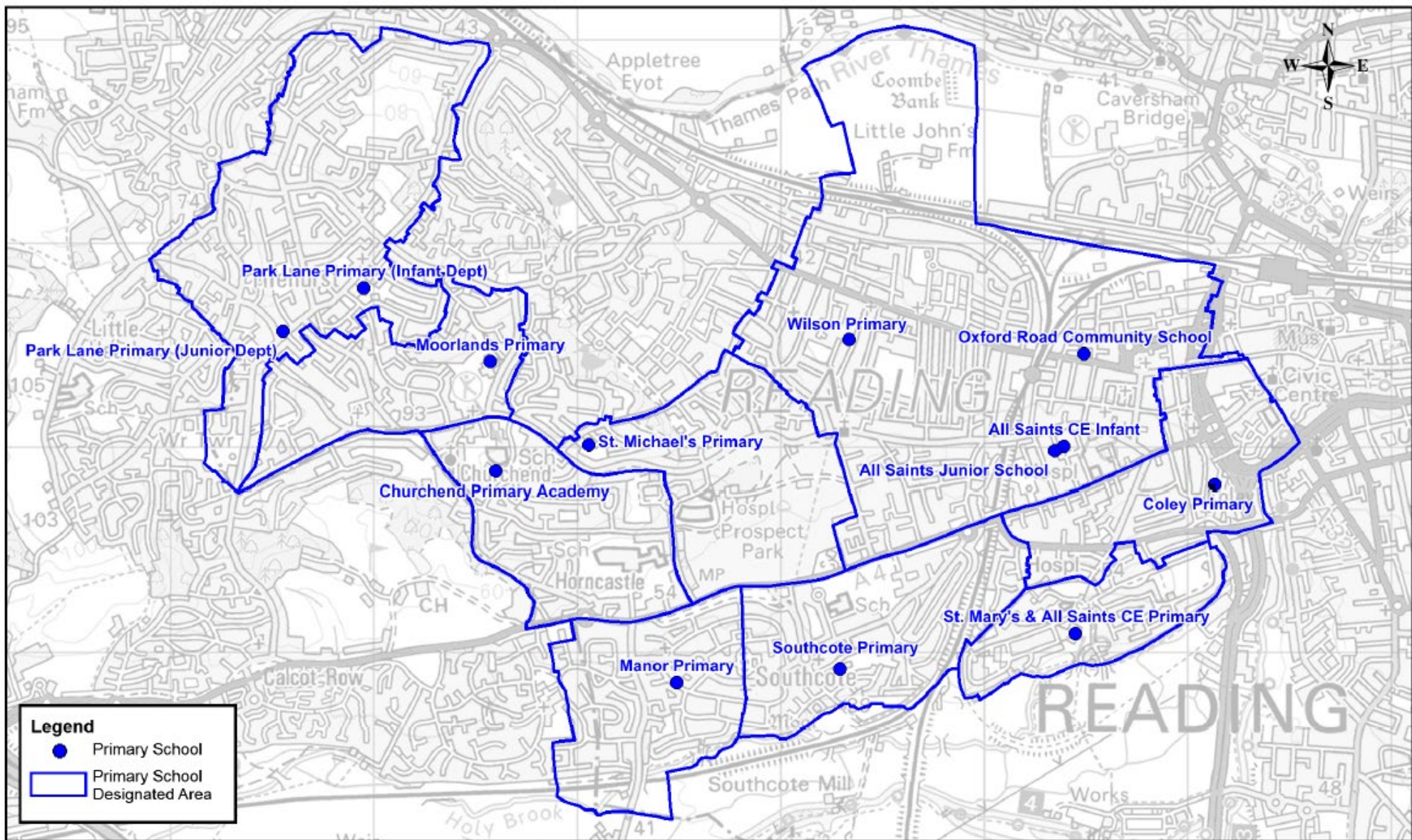
Scale at A4: 1:18000

Ref: G:\MND\CD\Edu & Commu\School Admissions\updated primary\designated



Reading
Borough Council

Working better with you



Legend

- Primary School
- Primary School Designated Area

Title: **Primary Schools Designated Areas**
West Reading

Drg.No.: GIS00014
Date: 09/08/2018
Scale at A4: 1:25000

Produced by GIS & Mapping Services
Ref:7223 - G:\Mapinfo\Data\Client datasets\Education & Community\School Admissions\updated primary schools\designated areas maps