

**Brighter
Futures for
Children**



Admissions to Secondary School

September 2024 - 2025

Guide for Parents and Carers - Moving on to Secondary School

Contents

Introduction	4
Explanation of terms	5
Timetable	11
Admissions to secondary school in Reading borough	12
What you need to consider before submitting an application.....	13
How can I find out more about a school?	13
Where can I get help with my application?	15
How to apply	16
Apply online	16
How to apply for a place in Year 10 in September 2024 at a UTC or Studio School.....	18
Oversubscription criteria	19
Strong medical or social grounds.....	19
Pupil Premium and Service Premium	19
Religious reasons	19
Address information	19
How the application will be considered.....	24
How the offers are decided	24
The Equal Preference System	24
Applications received after the deadline.....	26
Change of preference	26
Waiting list	26
School appeals	28
Questions & answers	29
In-Year admissions	34
Post 16 and Sixth Form Admissions	34
School transport.....	35
Financial assistance, charging and general information.....	38
Special educational needs and disabilities.....	40
Past allocations 2023	42
Past allocations 2022	45
Map of Reading secondary schools	47
Schools	48
Blessed Hugh Faringdon School.....	49
Highdown School and Sixth Form Centre	51

John Madejski Academy	53
Kendrick School.....	55
King’s Academy Prospect	57
Maiden Erlegh School in Reading	59
Reading Girls’ School.....	61
Reading School.....	63
The Wren School.....	66
River Academy, opening September 2024 (subject to DfE approval).....	68
Application process.....	68
Schools in other local authorities	70
Wokingham Borough Council	70
West Berkshire Council	71
Oxfordshire County Council.....	71
UTC and Studio Schools	72
UTC Reading.....	72
UTC Oxfordshire.....	72
Futures Institute Banbury	73
Useful numbers and contacts	74
Other local authorities contact information.....	74
Other useful telephone numbers	74
Useful websites	75

Introduction

Dear Parent/Carer,

We are Brighter Futures for Children and we took over the delivery of children's services in Reading in December 2018.

We are wholly-owned by Reading Borough Council but independent of it, with our own staff, management team and Board. On behalf of the council, we deliver children's social care (including fostering and early help), education, special educational needs and disabilities (SEND) and youth offending services.

Our vision and aim is to unlock resources to help every child have a happy, healthy, and successful life.

Part of our education remit is to deliver the school admissions service, in line with local authority statutory duties. Transferring from primary to secondary school is an important step in your child's education. Reading schools are an excellent choice.

This guide is designed to help you through the process and to make applying for a school place as smooth and straightforward as possible.

It contains a lot of detail, and it is important that you read it carefully and follow the guidance step-by-step to ensure you maximise your chances of reaching a successful outcome for you and your child.

Throughout this guide you will see references to both Brighter Futures for Children and Reading Borough Council, as well as both 'Children Looked After' and 'Looked After Children'. We use the former and are encouraging others to do so, as we've asked our children in care and it's a term they prefer.

This guide gives you a flavour of the full range of opportunities our wonderful schools offer.

If you need further help with your application, please contact the School Admissions Team at:



**School Admissions Team, Brighter Futures for Children,
Civic Offices, Bridge Street, Reading, RG1 2LU**



admissions@brighterfuturesforchildren.org



0118 937 3777

Explanation of terms

Some of the terms, abbreviations, and legal extracts we are required to use in this guide may be difficult to understand and we hope these explanations will help. However, if you are unsure about anything, please telephone the School Admissions Team.

Admission Authority

The admission authority of a school determines the admission policy for the school. The admission authority for community primary schools is the local authority and the admission authority of a voluntary-aided school or academy is the governing body of the individual school. There are no community secondary schools in Reading.

Published Admission Number (PAN)

Every school has a Published Admission Number (PAN). The PAN is normally based on the number of classrooms and specialist teaching rooms (i.e. the physical capacity). The PAN represents the maximum number of places available in the year group which pupils normally enter on joining the school. Places must be offered up to this number. The admission number for each school is given in the information on schools later in this guide.

Categories of schools

State schools are governed in different ways depending on the type of school. The category of the school determines the admission authority. Although the admission authority may be the governing body, applications for admission into Year 7 at these schools must be made to the child's home local authority and the home local authority will make the offers of places at these schools.

Community Schools

These schools are maintained by the local authority (LA). The LA is the admission authority, and it is responsible for determining the admission arrangements and allocating school places. There are no community secondary schools in Reading.

Voluntary-Aided (VA) Schools

A school set up and owned by a voluntary body, usually a church body. Management responsibility is shared with the LA, but the church or governing body play a greater role. The governing body is the admission authority, and its admission criteria will normally be different from those used by the LA. The governing body is responsible for allocating school places.

Foundation Schools

A type of state school introduced in 1999 by the School Standards and Framework Act 1998, which gives the governing body more freedom to manage their school and decide their own admissions policy. The governing body is responsible for allocating school places.

Academy / Free Schools

Academies are publicly funded schools which operate outside of local authority control. The government describes them as independent state-funded schools. Essentially, academies have more freedom than other state schools over their finances, the curriculum, and teachers' pay and

conditions. A key difference is that they are funded directly by central government, instead of receiving their funds via a local authority.

Free schools may be set up by groups of parents, teachers, charities, trusts, religious or voluntary groups. They will be set up as academies and funded in the same way - directly from central government. They are 'all-ability' schools, so cannot use academic selection processes like a grammar school. Free schools can set their own pay and conditions for staff and change the length of school terms and the school day. They do not have to follow the national curriculum.

Independent Schools

Reading has several independent schools. These are not administered by the local authority school admissions service. If you would like your child to attend one of these schools, you must apply directly to the school.

Application Form (CAF)

Also known as the Common Application Form (CAF). Parents/carers must apply for a Year 7 secondary school place to their home local authority. Reading Borough Council residents must apply to Reading either online at <https://brighterfuturesforchildren.org/for-parents-carers/schools/admissions/> or on the Reading application form. Those wishing to request a place at UTC Reading should apply directly to the college (please note that entry to UTC Reading is from Year 10).

Normal admission round

This is when children start school at the earliest entry point for that school. Normal admissions rounds are as follows:

- Entry to primary or infant schools in Reception Class
- Entry to junior schools in Year 3
- Entry to secondary schools in Year 7
- Entry to Year 10 for studio schools and university technical colleges (Year 9 for the Atrium School) and for those FE college and sixth forms with provision for students aged 14-16
- Year 12 for schools with a sixth form.

In-Year admissions

An In-Year admission is when you apply to a school outside the normal admissions round and at a time when your child should already be attending school.

You would normally be making an In-Year application if you have recently moved, you have arrived from another country or you want to transfer your child to another school.

Department for Education (DfE)

This is the central government department responsible for children's services and education, including early years, schools, higher and further education policy, apprenticeships, and wider skills in England. The DfE publishes the School Admissions Code, a legal framework that all local authorities and schools must follow for school admissions. Brighter Futures for Children manages Reading Borough Council's coordinated admission scheme, and the admission policies of our schools

comply with the legal requirements of this code. The latest version of the School Admissions Code can be obtained from the DfE website (www.education.gov.uk).

Designated Area/ Catchment Area

Catchment area (sometimes known as 'designated area') is a geographical area within which children are given priority for admission to a school. It is often used as part of the oversubscription criteria for a school, e.g. where there are more applications than places available, children living in the catchment area will be given priority. Living in the catchment does not guarantee admission to that school.

A map of the Reading Borough Council area on page 47 shows the designated areas of schools in the borough. More detailed information on the designated areas in Reading is available from Reading Borough Council's website (<https://my.reading.gov.uk/>) or from the School Admissions Team. Some voluntary-aided schools may use parish (or other) boundaries to prioritise admissions. Information about designated areas for schools in other local authorities may be obtained from the authority in question.

Feeder link

Some schools, like Maiden Erlegh School in Reading, use a feeder link as part of their oversubscription criteria. It is important that you check if your chosen school has this and ensure you declare the feeder link on the application.

Home Address

The definition of the child's home address can vary depending on the policy of the admission authority. You will need to check this for your preferred schools.

Local Authority (LA)

The local authority (LA) is responsible for the maintained schools in its area. Your home LA is the LA in which you live and pay council tax. This may be different from the LA in which your child attends school. Reading Borough Council (RBC) is the local authority for Reading.

Children Looked After (CLA)

These are children in the care of a local authority (in our case, BFFC), or provided with accommodation by an LA or in an arrangement supported by an LA. We shorten this to CLA, as our children prefer this, but in current legislation and in some school policies, they are referred to as looked after children (LAC).

Medical/Social

It is important that you check whether the admission authority of your preferred school(s) uses this category as part of the oversubscription criteria for admission. It is not used by all admission authorities and, where used, is given different levels of priority. If you believe your application meets the criteria, you must check how the admission authority of your preferred school will consider your application and what evidence you must supply.

It is not enough to simply tick the medical/ social boxes online (or on the paper form). In such cases, the School Admissions Team will not contact the parent/carers to request supporting evidence and the application will not be considered under this category.

Supporting evidence must be provided by you at the time of application to be considered as part of the main allocation.

National Curriculum

The current National Curriculum provides a broad and balanced education for all children. It is divided into four Key Stages, according to age.

It includes statutory assessments, consisting of tests and teacher assessments, at the end of Key Stage 2 and teacher assessments at the end of Key Stages 1 and 3. The key stages in secondary school are:

Year 7	Key Stage 3	11-12 years
Year 8		12-13 years
Year 9		13-14 years
Year 10	Key Stage 4	14-15 years
Year 11		15-16 years
Year 12	Post 16	16-17 years
Year 13		17-18 years

NOR

Stands for “number on roll” and means number of children attending a school.

Ofsted

This is the abbreviated name of the Office for Standards in Education, which is the government department responsible for inspecting and producing inspection reports on schools. Ofsted reports are available from schools or from www.ofsted.gov.uk.

Oversubscribed Schools

This is where there are more applicants than places available at a school.

Oversubscription Criteria

These criteria decide which children will be given priority where a school receives more applications than the number of places available (see published admission number). The oversubscription criteria for each Reading school are given in the information on the schools.

Parent

Any person having parental responsibility for a child (as defined in the Children Act 1989) or who has care of a child, including an LA. Section 576 of the Education Act 1996 defines ‘parent’ as all natural parents, whether they are married or not; any person who, although not a natural parent, has parental responsibility for a child or young person; any person who, although not a natural parent, has care of a child or young person (having care of a child or young person means that a person with whom the child lives and who looks after the child, irrespective of what their relationship is with the child, is considered to be a parent in education law).

Pupil Premium

The pupil premium gives schools extra funding to raise the attainment of disadvantaged pupils from reception to Year 11. Children eligible for pupil premium are:

- all children eligible for free school meals at any point in the past six years
- children looked after who have been looked after for one day or more
- children who are adopted
- children who leave care under a Special Guardianship Order, a Residence Order or Child Arrangement Order.

Service Premium

The service premium gives schools extra funding to support children and young people with parents in the armed forces. Pupils attract the premium if they meet the following criteria:

- one of their parents is serving in the regular armed forces
- one of their parents served in the regular armed forces in the last three years
- one of their parents died while serving in the armed forces and the pupil is in receipt of a pension under the Armed Forces Compensation Scheme (AFCS) and the War Pensions Scheme (WPS).

Selective Schools or Grammar Schools

Grammar schools may select their pupils by academic ability and leave places unfilled if there are insufficient applicants of the required standard. Your child will need to take an entrance test for these schools. In the borough of Reading, Kendrick School and Reading School are grammar schools.

SEND

SEND stands for special educational needs and/or disability.

Sibling

The definition of sibling may vary but, unless otherwise stated by the admission authority, the following definition will be used:

Brother or sister, half-brother, or half-sister adopted brother or sister, stepbrother or stepsister, or the child of the parent/carer's partner, and in every case, the child should be living in the same family unit at the same address.

In most cases, only siblings still attending the preferred school in September 2024 will qualify as siblings. You will need to check the definition of sibling in the policy of your preferred school(s).

A child who is part of a multiple birth (e.g. twins) is not classed a sibling for the purpose of ranking by oversubscription criteria. However, where application of the oversubscription criteria would result in splitting children from a multiple birth, the other child/children will usually be admitted to the school.

Specialist Status

Secondary schools focus on chosen subject areas while meeting national curriculum requirements. The specialism of each school is given in the information about the school.

Straight-line distance – Tiebreaker

An admission authority may use radial (or straight-line) distance from the home to school as part of the oversubscription criteria. In most cases this is used to rank applications where there are more applicants than places available within a category of the oversubscription criteria. This is called the tiebreaker. In Reading, all schools measure the straight-line distance from the home to the school using the Ordnance Survey data points of the home and the school using computerised software of Reading Borough Council. Every address has a unique data point which is determined by the Easting and Northing. This point can be anywhere on the property.

The distance created is given in miles to three decimal points. Admission authorities in other local authorities may use a different method for calculating the distance from the school.

Supplementary forms (SIF)

Some schools consider extra information not captured on the CAF to help them rank applications according to their oversubscription criteria. Therefore, you may also wish to complete a supplementary form if you are seeking a place at a faith school (e.g. Blessed Hugh Faringdon Catholic School) or a selective school.

Reading School and Kendrick School are selective grammar schools, and your child must sit their entrance tests to be considered for admission. To register your child for the tests you must complete the school's registration form.

Reading Girls has a selective stream, and your child must sit their entrance tests to be considered under this criterion. To register your child for the tests you must complete the school's registration form.

The John Madejski Academy tests applicants for sporting aptitude. If you want your child to be considered for this school on their sporting aptitude, you must complete their additional form. You should check whether a supplementary/additional form will be required to support your application and the date you need to return the form.

Maiden Erlegh in Reading gives priority to children in receipt of Pupil Premium. The school has a supplementary form which needs to be completed to be considered for this category. This needs to be endorsed/stamped by your child's current school.

Supplementary forms can be downloaded from <https://brighterfuturesforchildren.org/for-parents-carers/schools/admissions/>. Please note that supplementary forms should be returned to the relevant school(s).

Timetable

ACTION	DATE
Guide for Parents & Carers to be placed on Brighter Futures for Children's website	By 11 September 2023
Online admissions site opens for applications	By 11 September 2023
National closing date for receipt of applications	31 October 2023
Deadline for providing evidence to meet admissions criteria (please see individual school pages to see which schools require additional information)	31 October 2023
Deadline for late applications, changes of preference and changes of address to be accepted with good reason (evidence of reason must be submitted).	31 December 2023
National Offer Day - offer letters posted second class to Reading residents who applied via a paper application	1 March 2024
Online applicants may view outcome of their application	1 March 2024
Deadline for parents to accept place offered	15 March 2024
Closing date for submitting an appeal, to be heard on time	30 March 2024
Late applications for oversubscribed schools added to waiting lists	21 March 2024 * subject to change
Appeals to be heard if submitted by the deadline	May to June 2024
Coordination with other LAs ends	31 August 2024
Waiting lists held for Reading schools	Until at least 31 December 2024

Admissions to secondary school in Reading borough

Brighter Futures for Children delivers the school admissions service on behalf of Reading Borough Council.

There are nine secondary schools within the borough of Reading, including two grammar schools. Secondary school places are allocated by the School Admissions Team, taking account of the relevant admissions policy, published arrangements and the number of places available at each school.

The purpose of this guide is to provide you with information on the allocation process, including the timeline on how places are allocated, and to give details of our schools (together with those in neighbouring authorities which are often attended by Reading borough pupils). A key to terms and abbreviations used in this guide is shown at the beginning of this book.

If you live within the borough of Reading (i.e. you pay council tax to Reading Borough Council) you should complete the Reading application form (CAF) to apply for any secondary school within the borough of Reading and/or schools in other local authorities.

Residents of other local authorities must apply for schools using the admissions service provided by their own local authority. If you live in another authority and are considering a school in the borough of Reading, you should read this guide to understand the basis upon which places are allocated. If you express a preference for a Reading borough school, your local authority will forward your child's application to us.

All local authorities operate a coordinated admissions scheme using electronic transfer of information to allocate places in accordance with published arrangements. This coordinated scheme continues until 31 August 2024 and eliminates multiple offers of school places.

Only one application will be accepted. Should more than one application be received for your child, the School Admissions Team will process the application received most recently.

Please note that we recommend you apply before the closing date of 31 October 2023.

If you have any queries or need further information about applying for a school place, please contact: School Admissions Team, Brighter Futures for Children, Civic Offices, Bridge Street, Reading, RG1 2LU

Tel: 0118 937 3777

Email: admissions@brighterfuturesforchildren.org

Website: <https://brighterfuturesforchildren.org/for-parents-carers/schools/admissions/>

What you need to consider before submitting an application

There is a coordinated admissions process in England with exchange of information between local authorities (LA). This means that you must apply to your home LA for any state-maintained secondary school in England.

The main points of Reading Borough Council's coordinated scheme are:

- If you live in Reading borough, you must apply to Reading School Admissions either online or by completing a paper application form.
- You may list up to four preferred schools on your child's application.
- You are advised to put more than one preference as you are not guaranteed a place at your preferred school. If we are not able to offer a preferred school, the School Admission Team will allocate a place to your child at the closest school to your home with places available.
- Preferences should be ranked with your most preferred school listed first (i.e. preference 1)
- You must include any state school you would like your child to attend including schools in other LAs e.g. Oxfordshire, West Berkshire, Wokingham. This includes voluntary-aided schools, foundation schools, grammar schools, free schools, and academies.
- You may also need a supplementary form for some schools. Failure to submit these forms may result in your child being ranked in a lower category.
- You must apply by 31 October 2023.
- Applications for schools named by parents/carers are considered by the appropriate admission authority for the school without reference to your preference order.
- All parents/carers who have applied for a school place by the closing date will receive an offer of one school place.
- The offer of a place by the LA may be on behalf of other admission authorities.
- Offer notifications will be distributed, to those who submitted "on-time" applications, on National Offer Day.
- You will be required to accept the place offered by the deadline as stated in the timetable at the beginning of this guide.
- All schools will run waiting lists until at least the end of December 2023, and some may hold waiting lists longer.

How can I find out more about a school?

The School Admissions Team must remain impartial. It is up to the parent/carer to research their preferred schools before submitting their application form.

You may already have an idea regarding some of the aspects of a school which are important to you or your child. You may have talked to other parents/carers and, although their ideas may be helpful, you should always make your own judgement.

You can visit schools by attending open days/evenings or by appointment with the school. Information about open days/evenings may be obtained from the school. You can find other information about the school from the school's website. This includes:

- school's aims and objectives
- the curriculum offered
- attainment and achievements of pupils
- attendance figures

- out of school activities and clubs
- information on policies, such as behaviour and discipline
- sixth form.

You can find information about attainment and assessment results, Ofsted reports and school profiles from get-information-schools.service.gov.uk/.

You should consider the following points and use available information to evaluate the likelihood of securing a place at your preferred school(s).

- How far your child will need to travel and how they will get there? How much will it cost?
- Will you be entitled to any assistance with travelling expenses? See page 35 for details on Reading's transport policy.
- Does it give preference to faith or religious denomination?
- How many pupils are there and how many places are available?
- Was the school oversubscribed in previous years? The pages concerning the individual schools in Reading (found later in this guide) give information about how many applications there have been for each school and how places have been offered in the past. Other LAs have this information in their guides for parents and carers. This information is a guide only as admission authorities cannot accurately anticipate demand.
- Whether your preferred school is the designated school for your home address. You can check this on the Reading Borough Council's website <https://my.reading.gov.uk/>.
- Although living in the catchment area does not guarantee admission to the school, it is important to consider naming your catchment area school as one of your preferences. If we are unable to offer one of your preferred schools and your catchment area school is full, you could be offered a place at a school some distance away. Even if you name the school as your lowest preference, the application will be given a priority for admission because you live in the designated area.

When you have selected your preferred schools, you must submit a CAF to Reading School Admissions by 31 October 2023. While you have the right to express a preference for a school, you do not have the right to a place at that school. The admission authority for your preferred school(s) will consider your application and if there are places available, a place will be offered. However, if there are more applications than places available, the admission authority for the school will apply their oversubscription criteria.

Where can I get help with my application?

If you have any questions about the admission process, you can contact the School Admission Team:

- Telephone: 0118 937 3777
- Email: admissions@brighterfuturesforchildren.org

If you would like impartial advice on any aspect of school admissions, you should contact:

ACE Education - an independent charity that provides free advice to parents on education matters including school admissions.

- General advice line: 0300 0115 142
- Website: www.ace-ed.org.uk

If your child has special educational needs or a disability (with or without an education, health and care plan), Reading Information Advice and Support Service for SEND (known as Reading IASS), can offer you free, confidential, and impartial information, advice, and support around secondary transfer.

- Telephone: 0118 937 3421
- Email: iass@brighterfuturesforchildren.org
- Website: www.readingiass.org



How to apply

Apply online

- It is simple and convenient
- You can apply on most smartphones and tablets
- You can change your preferences at any time until the closing date 31 October 2023
- You will receive an email confirming your application has been submitted
- You will receive an email on the morning of 1 March 2024 informing you to which school your child has been allocated.
- You can also log in and view your allocation on 1 March 2024.

Reading residents apply online at *(click on the link below)*:

www.brighterfuturesforchildren.org/school-admissions

Please apply to the LA where your child lives - only apply to Reading if your child's permanent home is in the borough of Reading.

Admissions to state funded secondary schools in England are coordinated across local authority boundaries. This means that, if a child lives in Reading and the parent wants to apply for a place at a school in a different local authority, the parent must apply via Reading Admissions Team.

Please read carefully through this guide on how to apply. The following information will also help you to apply online or complete the paper application form. Full details on how to apply online are available on the Brighter Futures for Children website.

Paper application forms are available from any Reading primary school or the Civic Offices.

Paper application forms and online applications are treated the same and are not treated on a "first come, first served" basis.

If you apply using a paper application, your formal offer letter will be posted second class on 1 March, to the home address provided on the application form. Please note, this may take two to three days to arrive, so we recommend applying online.

1. Child's details

You must provide your child's legal surname as given on their birth certificate (or deed poll in cases where there has been a change of name).



2. Home address

Your home address is an important factor in how your application is considered. We will check addresses against council tax data held by Reading Borough Council. The address you give on the form **MUST** be your child's single permanent home. See page 19 for further information. If you give an incorrect address and we offer a school place based on that address, the offer may be withdrawn.

The admission authority reserves the right to obtain additional information to verify addresses.

3. Parents/Carers details

Please ensure you complete the section(s) on parents/carers details and remember to provide a daytime telephone number. We recommend that the parent/carer who is listed on the Council Tax record makes the application, as this facilitates the address verification process.

4. Preferences

Selecting your preferred schools and deciding on your preference order is important. You may list up to four schools, starting with preference 1: the school you most want your child to attend. Before deciding which schools to list, you are strongly encouraged to read our guide. It may also be possible to visit schools which we would also recommend.

It is important to understand the admission rules for a particular school to assess the likelihood of being able to obtain a place for your child. If a place is not offered at one of the schools listed on your application, it will be because there were other children who had a higher priority for a place under the school's admission rules. The admission rules for every state-funded school in Reading can be found later in this guide. If you believe your application should be considered under a certain oversubscription category, please be sure to provide the relevant supporting information.

You are not required to name four preferences, however, listing more than one may increase the probability of being offered a preferred school. Please do not list a preferred school more than once. If you list only one preference and the school cannot be offered, the School Admissions Team will allocate a place to your child at the closest school to your home with spaces available.

When selecting a Maiden Erlegh Trust school - Maiden Erlegh School, Maiden Erlegh School in Reading, Maiden Erlegh Chiltern Edge, River Academy - it is important to list the correct one. If you put simply "Maiden Erlegh School", we will assume you mean Maiden Erlegh School (in Wokingham).

5. Siblings

If your child has a sibling who will be attending a preferred school in September 2024, you must provide their name and date of birth. Siblings who, in September, will be in Years 11, 12 or 13 are not always counted as siblings in oversubscription criteria. Please check the admission policy of your preferred school. Failure to declare a sibling on your application in the correct sibling box may result in your application not being ranked in that category.

6. Declaration and signature

Please check all the sections of the application form. If you have completed a paper form, please sign and date the form. If you apply online, you cannot submit your application unless you accept the terms and conditions box.

By signing the paper form or accepting the online terms and conditions, you are declaring that the information given on your application form is correct and that you have read our admissions guide.

Where incorrect information is given, the School Admissions Team reserves the right to withdraw an offered place at any stage of the process.

7. Returning the application form

If you have chosen to complete the paper application form and your child is currently attending a school in Reading, you may return the form to your child's school. The school will forward the form to the School Admissions Team.

PLEASE NOTE: The School Admissions Team aims to acknowledge all on-time paper applications within 15 school days of receipt. However, in busy periods this may not be possible. Please contact the team if your application has not been acknowledged after 20 school days. Late applications are not processed until after 21 March 2024. When the late application has been processed you will receive confirmation.

The closing date for receipt of paper application forms is 31 October 2023.

The website will close at midnight on 31 October 2023.

If your child does not attend a Reading school, please return the form to: School Admissions Team, Brighter Futures for Children, Civic Offices, Bridge Street, Reading, RG1 2LU.

Please remember, A4 envelopes are not charged at the normal postage rate. Failure to pay the correct postage charge may delay receipt of your application.

Applications posted on 31 October 2023 will not be accepted as "on time". The application MUST be received by the School Admissions Team, or your child's school, within office hours on 31 October 2023.

The information provided by parents/carers will be kept safely on a database in accordance with the General Data Protection Regulation (GDPR). This ensures the data provided is only used for defined purposes.

How to apply for a place in Year 10 in September 2024 at a UTC or Studio School

Parents of young people born between 1 September 2009 and 31 August 2010 (inclusive) may apply for places in Year 10 for their children in Studio Schools or University Technical Colleges (UTCs). Parents do not need to do anything if they wish their children to continue at their current secondary school. Parents should note that not all University Technical Colleges and Studio Schools in England are part of the coordinated admission process for their local authority. Applications for UTC Reading or other UTC or studio schools should be made directly to the relevant schools.

Oversubscription criteria

Please consider whether any of the following apply to your child's application and provide the relevant information/evidence.

Strong medical or social grounds

This category only applies to certain schools. You will need to check if it applies to your preferred school. Where the category does apply, you will need to supply relevant evidence to support your application. Please note, certain schools require evidence to state precisely why they are the only school that can meet the child's/family's needs. If you do not provide the evidence outlined in the school's oversubscription criteria, your application will not be considered by the relevant panel for this category.

You must supply evidence prior to 31 December 2023 to be considered within this category. Any submission after this date may not be considered in time for National Offer Day. Neither the School Admission Team, nor the school will contact a professional to obtain any necessary evidence. Additional information produced late, will be considered late and only affect a child's place on the waiting list.

Pupil Premium and Service Premium

Some schools (such as Maiden Erlegh in Reading) give priority within a category to children who are in receipt of the Pupil Premium (PP) at the time of application. To be considered for this priority, parents/carers are required to complete a Supplementary Information Form (which must be endorsed by the child's current school) confirming they receive pupil premium for the child. This form can be downloaded from the Brighter Futures for Children website or obtained from the relevant school.

These forms must be sent to the School Admissions Team for your child to be considered in this category.

Religious reasons

If you have selected a school for religious reasons (for example Blessed Hugh Faringdon Catholic School), you are advised to complete the school's supplementary form (SIF) and return it by the specified date. Please check the relevant school's admissions policy for the date. Failure to submit this form to the school(s) may result in the application being ranked in a lower category.

Address information

Home Address

The definition of a child's home address may vary from one local authority to another. You should consult the admissions policies of the local authorities in which your preferred schools are located. The following definition is used to establish the home address for most schools in Reading. Please note that Kendrick School and Reading School use a different deadline for establishing whether an applicant is in their designated areas. The address used on the Kendrick School or Reading School application form should correspond to the address provided on the local authority application. Where it is not the same, the discrepancy will be investigated. Please check the Reading School and Kendrick School admission policies for clarification.

Definition of home address

Applications are processed using the child's single permanent home address, where the child lives with parent(s)/carer(s)/legal guardian(s). The child must live at this address on the closing date for applications and, when submitting their application form, the applicant is confirming the child will reside at the address on National Offer Day.

The application form should be completed using the address (owned, leased, or rented) where the child lives for most of the school week. This is based on the number of school nights a child spends at the home (Sunday at 6pm to Friday at 9am). The applicant should consider whether their name is on the council tax records (or tenancy agreement) for the address. If the applicant's name is not showing on these documents, it may be more difficult to prove their liability at the address.

Reference will be made to council tax records when determining a single address for consideration under the home address criteria of the schools' policies. It is for the applicant to satisfy the local authority that they live at the address stated. An address will not be accepted where the child is resident other than with a parent or carer (unless this was part of a private fostering or formal care arrangement).

Fraudulent addresses or false information

We have a duty to ensure applications are genuine in all aspects. If your child moves into the home of a friend or relative during the process, or you provide an alternative address as a deliberate device to improve your child's priority for a school place, or other details are provided on the application form which prove to be untrue – this is a misleading application. If it becomes clear a place has been allocated based on false information, we may withdraw the child's offer, even if they have already started at the school.

The School Admissions Team occasionally receives information from members of the public concerning potential misleading or fraudulent applications. Signed statements will be required to support such allegations, together with supporting evidence, in order that they may be investigated. The names of anyone supplying information will be withheld in accordance with the council's whistle-blowing policy (details of which may be found here: <https://www.reading.gov.uk/the-council-and-democracy/council-strategies-plans-and-policies/whistleblowing/>).

Temporary addresses

Some residential arrangements will be considered temporary. In such cases, the School Admissions Team will examine available evidence to determine whether, on balance, the declared home address may be considered the child's permanent home for the purpose of admission.

In cases where the declared address is rented, yet the applicant has no claim on another property, it may still be considered a temporary address where there is evidence to show the applicant is renting the property solely for the period necessary to secure admission to a school.

A temporary address cannot be used to obtain a school place and will only be considered where evidence is provided showing a genuine reason for the move e.g., homelessness, flooding or subsidence.

Multiple properties

Checks will be made to determine whether the home address declared is that of a second home (with the main home being elsewhere).

Any circumstance where the declared address is to be accepted as the permanent home, despite another home being owned or otherwise available for occupation, should be declared at the point of application. Without being exhaustive these might include:

- an owned property being a considerable distance from the preferred school, indicating that the family had permanently relocated to the new home; or
- an owned property that is uninhabitable and cannot reasonably be made habitable in the period leading up to admission to the school; or
- an owned property that is in the process of being sold and the family live permanently in the declared property; or
- a family home that, following divorce or separation, cannot be occupied by the applicant, or otherwise treated as the child's permanent home.
- an owned property on a buy to let mortgage which is occupied by tenants.

Changes of address

If you have submitted an on-time application and relocate on or before 31 December 2023 (bar Kendrick School and Reading School who have their own dates), you must inform us of your change of address. You will need to submit the details to admissions@brighterfuturesforchildren.org along with evidence that your move has taken place. The evidence we require is either proof of "exchange of contracts" or a fully signed tenancy agreement showing your child will reside at the address past their entry into secondary school. If you move locally or within 20 miles, we also require evidence that you have disposed of your previous property, i.e. a copy of the end of tenancy arrangements or proof contracts have exchanged.

Designated / Catchment area

If you need advice about the designated/catchment area school for your home address you can look at the following website <https://my.reading.gov.uk/> or you can contact the School Admissions Team.

Split living arrangements

Where a family claims to be resident at more than one address, evidence of the family's circumstances will be required (e.g. formal residence order, child arrangements order or legal separation documentation). The application must be completed by the parent using the address which is owned, leased, or rented and where the child lives for the majority of the school week. This is based on the number of school nights a child spends at the address (from Sunday at 6pm to Friday at 9am).

Where children live across two addresses, families cannot use whichever address would advantage their child's admission into a certain school.

Where there is an equal split or there is any doubt about residence, the School Admissions Team will assess and make a judgment about which address to use for the purpose of allocating a school place. Where necessary, further information may be requested, for example:

- any legal documentation confirming residence
- the pattern of residence
- the duration of the current arrangement
- confirmation from the current school of the primary contact details and home address supplied to it by the parents
- the address where child benefit or other benefit (if applicable) is paid

- where the child is registered with their GP
- any other evidence the parents may supply to verify the position.

It is recommended that consensus be reached by both parties regarding the school preferences listed. Only one offer letter will be sent to the main applicant, unless otherwise requested (and agreed) by both parties.

The information provided to determine the home address will be considered by an admissions panel of at least two officers and their decision is final.

Disputes between parents

Anyone with parental responsibility may apply for their child's school place and list up to four preferred school(s). However, the child's address on the application should be recorded as the place they spend most of the week as set out in our definition of 'Home Address'.

When completing application forms, parents/carers must tick to confirm they have parental responsibility for the child and that their application is made with the agreement of all parties having parental responsibility.

Where parents disagree over which school preferences should be named, we recommend starting the following process as early as possible as national closing dates are fixed and cannot be extended under any circumstances.

We urge parents to work together in the best interests of their child; it is advised that the applicant should inform all other parties who have parental responsibility before submitting the application.

All parties should agree with the school preferences to be listed. Any disagreements should be resolved before an application is submitted. If parents are unable to reach an amicable agreement, then both parents should seek their own legal advice or recourse through the Family Court.

You should note that the local authority will only process one application per child and will only make one offer of a school place.

Where more than one application is received with different preferences, the local authority (or local authorities if parents submit applications to more than one) will contact both applicants to advise that more than one application has been received and request they complete one application with one set of preferences for their child.

We will not mediate between parents where there is a dispute or when two applications are submitted. Only one application will be accepted, and the final decision will rest with the local authority after all submitted evidence has been considered.

All evidence must be received by the published closing dates, at which point a decision will be made as to which application will be processed. The local authorities concerned may contact the education settings noted in the application, or other professionals working with the child where applicable, to assist in their decision making. Any evidence provided after the closing date which affects the content or processing of the application, may render the application late, and delay an offer of a school place.

Applications from abroad (excluding service personnel)

It is the responsibility of parents to check that their children have a right, under their visa entry conditions, to study at a school.

Applicants are reminded that they should (where applicable):

- Check that they have the “right of abode” (www.gov.uk/right-of-abode)
- Ensure the conditions of their immigration status permit them to access a state-funded school.

By making an application, applicants are declaring they have checked their eligibility.

Having the “right of abode” means you are permitted to live or work in the UK without any immigration restrictions, as follows:

- You will not need a visa to come to the UK
- There is no limit on the length of time you can spend in the country.

All British citizens automatically have “right of abode” in the UK. Some Commonwealth citizens may also have “right of abode”.

You can prove you have “right of abode” if you have a UK passport describing you as a British citizen or British subject with right of abode. Otherwise, you need to apply for a ‘certificate of entitlement’.

Evidence required to accept an application for an overseas child:

- Copy of child’s passport
- Evidence of arrival into the UK
- Flight/ferry/bus ticket confirming child’s name and stating date of arrival
- Immigration stamp or stamped entrance clearance.

Evidence of ‘home’ address

- Where the Reading property is owned; a solicitor’s letter confirming completion of sale. In cases where the owned property is currently rented out, an ‘end of tenancy notice’ to the current occupiers should be supplied
- Council Tax bill – naming applicant
- Driving licence - naming applicant at address
- Where the Reading address is rented; a copy of the tenancy agreement showing applicant at the address and dates liable.

If you are moving to a temporary address we will also accept:

- Hotel/Air b’n’b accommodation confirmation. This should show dates of stay.
- Letter from applicant’s new employer (e.g. University, college) where accommodation is being provided by them and is tied to the new post/job.
- Other compelling evidence that you are returning or moving to the area, e.g. signed and dated letter from family/friend confirming names of parent and child will reside at their address.

Additional checks may be made using the Reading Borough Council tax system.

Families of Crown servants, returning from overseas to live in Reading, should also provide an official letter confirming the UK posting and their expected relocation date.

How the application will be considered

Upon receipt of the above “evidence for accepting an application”, the School Admissions Team will consider any application from an overseas applicant received by the closing date for “on time” applications.

The application will not be processed using a Reading address (i.e. for the purposes of ranking the application against a school’s oversubscription criteria) until evidence is received to show the applicant/child are both resident at the Reading address given. Until this time, the application will be considered without an address and will not be ranked by distance against a school’s oversubscription criteria.

As soon as the applicant/child are resident at the Reading address, they should advise the School Admissions Team accordingly. Upon receipt of the “evidence of home address” (see above), the Reading address will be applied to the child’s application adding distance/catchment data for the purposes of ranking.

How the offers are decided

Admissions to state-funded secondary schools in England are coordinated across local authority boundaries. This means that, if a child lives in Reading and the parent wants to apply for a place at a school that is in a different local authority area, the parent must apply via Reading School Admissions Team. The Reading team will liaise with the English local authority where the school is situated on behalf of the parent and child and will be responsible for sending notification of the outcome on behalf of the school / home local authority on National Offer Day.

The Equal Preference System

At secondary transfer, admission authorities for all state-funded mainstream schools in England must follow the “Equal Preference System”. This is a requirement of the Department for Education’s School Admission Code 2021. This prevents admission authorities giving higher priority to parents who make a particular school their first preference.

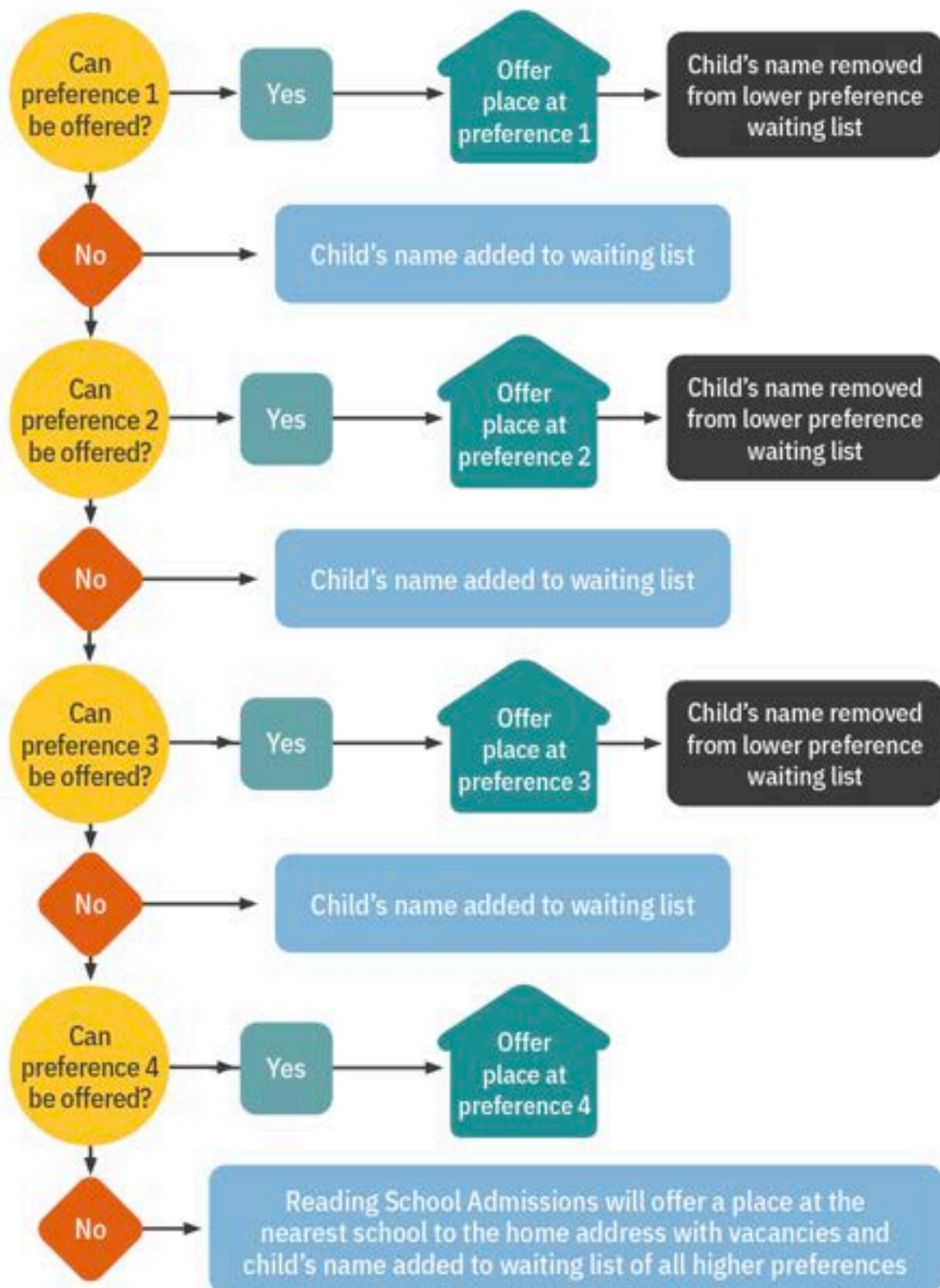
Every school that a parent lists on the application form is treated as a separate application and the highest possible preference will be offered. The admission authority for a school must not discriminate against any application because a parent did not express a first preference for that school on the application. Offering places based on “first preferences first” would be unlawful. Schools are not told whether a parent ranked the school as a first, second, third or fourth preference.

The priority for admission is established using the admission rules for the relevant school. Once this information is available the preferences are then considered by the local authority acting as the “clearing house”. If, at this stage, it was theoretically possible to offer a place at all of the preferred schools listed, the school offered would be the one listed as the highest preference. If a place cannot be offered at any of the schools listed as a preference, the local authority will offer a place at the nearest school with an available place.

The following website gives a very helpful explanation of how the Equal Preference System works in practice: <https://www.elevenplusexams.co.uk/schools/the-equal-preference-system>.

Offer notifications, to all Reading residents who made an on-time application, will be sent by the School Admissions Team on National Offer Day.

The flow-chart diagram below shows the process which results in each child being offered a school place:



Applications received after the deadline

An application received after the closing date for applications (31 October 2023) will be treated as a “late” application and be considered after all on-time applications have been allocated.

However, applications received late for a good reason will be treated as on time if received before 31 December 2023. Such good reasons might include illness preventing a single parent/carer from returning the form on time or the family moving into Reading after the closing date. **The reason for lateness must be supported with documentary evidence.** If no evidence is provided, the application will be considered as “late” and not processed until after 21 March 2024.

After 15 March 2024 and before 31 August 2024 late applications will be considered in line with the published admission criteria. Where possible, a place will be offered at a preferred school. If the preferred school is oversubscribed, the child’s name will be added to the waiting list in accordance with oversubscription criteria.

You will need to check the admission policies of other LAs for information regarding their treatment of late applications.

Change of preference

Changes of preference made in writing (and received between 31 October 2023 and 31 December 2023) may be accepted as “on time” providing a good reason is given (e.g., a family moving area or illness preventing a single parent from making an on-time application). In such cases, supporting evidence will be required. Any changes received after 31 December 2023 will be treated as late, regardless of whether supporting evidence is provided, and will be considered after National Offer Day.

An application with new preferences will replace any previous application, therefore it is important to list all the preferred schools (up to a max of four) for which your child is to be considered. After National Offer Day, if you do not list a school that you have listed on a previous application, your child will be removed from the waiting list of that school.

Waiting list

It is not always possible to offer a place at your first preference school or, in some cases, any of your preferred schools. This will be because your preferred school(s) received more applications than there were places available. Where this occurs, each application is ranked according to the school’s oversubscription criteria and places offered accordingly.

For example, a school may have 200 places and receive 300 applications. The applications are ranked (1 to 300) using the school’s oversubscription criteria and the top 200 pupils are offered places. The remaining 100 pupils may then be added to the waiting list.

Your child’s name will automatically be added to the waiting list of any school(s) you list higher in preference to the school your child is offered. This is the case for the waiting lists of any Reading, Oxfordshire, Wokingham, or West Berkshire schools listed on your application. You will need to check the policies of other local authorities. Waiting list information will not be made available until after 21 March 2024 (Please note this is subject to change)

As previously mentioned, waiting lists are always ranked according to the published oversubscription criteria of the relevant school and not by the length of time a child’s name has been on a list. As a

result, your child's position on a waiting list may change as new applications are added or places are offered.

If you accept the offer of another school place, this will not affect your child's position on any waiting lists. When you receive your school offer, you will be asked to complete an acceptance form. If you applied through the citizen's portal, you will be able to accept your school offer via your portal account until the acceptance deadline (15 March 2024 at midnight). If you submitted a paper application, you should accept your offer using the acceptance link found in your offer letter. When accepting, you will be asked whether you want your child's name to be removed from the waiting list(s) of any higher preference school(s). Your child's name will remain on a waiting list unless you ask for it to be removed.

Lodging an appeal for a place at a preferred school that was not offered to your child will not affect your child's waiting list position.

The School Admissions Team allocate places from the waiting list once a month. When a place becomes available, it will be offered to the child at the top of the waiting list. Positions on waiting lists can go up or down. A child who is top of the waiting list one day may not be top the next.

If a place becomes available for your child from a waiting list, the School Admissions Team will allocate that place and send you an offer letter. At the same time, the existing offer of a place at a lower preference school is withdrawn. Following the new offer, any school(s) listed lower in preference to the offered school will be marked as no longer required.

If, at any time after completing your acceptance form, you want your child's name to be removed from a waiting list, please confirm in writing to the School Admissions Team and your request will be actioned.

You should contact the School Admissions Team of the appropriate local authority for your child's waiting lists position for any preferred schools in other boroughs. Some Reading secondary schools maintain their own waiting lists; for your child's position, you should contact these schools directly. These are: Reading School, Kendrick School, and Blessed Hugh Faringdon Catholic School.

UTC hold their own waiting list and you should follow the school's instruction regarding accepting a place.

Reading schools are required to hold waiting lists until the end of December 2024. Some of our schools keep their waiting list past December. Please refer to the [school's "In-Year" admissions policy](#) which is available on its website.

School appeals

Appealing the decision not to offer a place at your preferred school

If your child is not offered a place at your preferred school(s) you can appeal against the decision. You should make an appeal, if possible, by the 30 March 2024 for it to be heard alongside others for the admission round. Appeals will be heard by an independent panel organised by the admission authority for the school.

Appeals submitted after the deadline will be dealt with separately.

Information on how to submit an appeal will be sent out with offer notifications and is available on the website www.reading.gov.uk/schoolappeals

All appeals are considered by a panel independent from the school and its decisions are legally binding on the school. The panel must weigh the impact of admitting an additional child to the school against the specific circumstances of the child and their family. Appeals lodged on time will be heard in the summer term from May - July 2024.

How many parts are there to an appeal hearing?

There are two stages to the decision-making process. For grammar school appeals, the Appeal Panel must also be satisfied that your child is of the appropriate academic ability.

- **First Stage** – examining the decision to refuse admission. Sometimes, when there are multiple appeals for the same school and year group, stage 1 will be heard as a group stage meaning all the parents are invited to attend together.
- **Second Stage** – balancing the arguments - this is done on an individual appeal basis.

What happens at an appeal hearing?

The appeal hearing will be as informal as possible, but the procedure - set out below - is followed to ensure everyone has the same opportunity to present their case and to ask questions.

Once the parent/carer who has submitted the appeal (the appellant) and the school's representative have entered the room and are seated, the chair of the appeal panel will welcome everybody to the appeal hearing. Everyone present at the appeal will then be asked to introduce themselves. The chair will then go on to explain the set procedure and how the appeal panel reaches a decision. The procedure below will be followed at the appeal:

- The school's representative will explain the reasons why a place could not be offered at the appellant's preferred school.
- The appeal panel and the appellant may ask questions of the school's representative about the reasons given and the written information they have submitted.
- The appellant will be given the opportunity to explain why they think their child should have a place at the school.
- The appeal panel and the school's representative can ask the appellant questions about the reasons they have given and the written information they have submitted.
- The school's representative will provide a summary of their case, without providing any new information.
- The appellant will be given an opportunity to provide a summary of their case, without providing any new information.

- The appellant and the school's representative will be asked to leave the room at the same time, whilst the panel deliberate. Where there is more than one appeal for the same school on the same day the panel deliberate at the end of the day.

Does it cost me to go attend an appeal?

No (bar any travel costs you incur). HOWEVER, it does cost the school £215 per appeal heard.

How many times can I appeal?

Parents/carers may only appeal once for the same child to the same school in the same school year. Parent/carers can make another appeal in the next school year.

The only exception to this is where there is a material and significant change in the circumstances of the parent/carer or child. This change must be relevant to the school application and must make a difference to whether a school would have allocated a place or not.

For which schools may I lodge an appeal?

You can only appeal the decision not to be offered a school place for any schools listed as a higher preference, than the one you have been allocated. i.e. if you are offered your second preference you cannot appeal your third or fourth preferences.

How likely is it that I will win an appeal?

Each appeal is judged on the information provided at that appeal. Please note that only approximately 1% of appeals heard are allowed.

Will lodging an appeal affect the place at my allocated school?

No, appealing will not affect the place at the allocated school. Neither does accepting the allocated place. You still have the right to appeal the decision not to be offered a place at your preferred school.

Questions & answers

This section may help you with any questions that have arisen while reading this book. If you have any other questions, please contact the School Admissions Team on 0118 937 3777.

Do I have a choice regarding which school my child attends?

While you do not have the right to choose which school your child will attend, you do have the right to express a preference. Where your preferred school has available places, your child will receive an offer. However, each school has a limited number of places and, where there are more applications than places, not every child will be offered a place. Places will be allocated according to a school's published oversubscription criteria found later in this guide.

Allocation tables for previous years, showing places offered for each school (by categories and tiebreakers), can be found later in this guide. The tables show the lowest category at which a place was offered for each of the schools in Reading on National Offer Day. For schools in other boroughs, please visit the appropriate local authority's website. Please note that this information should be used as a guide only – allocation numbers vary year-on-year, and this affects the lowest category at which offers are made.

I live in Reading. How do I apply for schools in other areas?

You must apply through Reading for any school, even those schools situated in other local authorities. You must include them on your application which should be submitted to Reading School Admissions Team.

You will need to find out about the admission arrangements for any preferred school(s) in other areas. To do this, you may contact the local authority with responsibility for the school to obtain a copy of their admission guide. Contact details for neighbouring local authorities can be found at the back of this guide. If, as a Reading resident, you apply directly to another local authority, the application will not be accepted.

Does living in a catchment area guarantee I will get a place for my child at that school?

Children living in the catchment area of a school are given priority for admission but are not guaranteed a place. Any offer will depend on the number of applicants from within the catchment area. Where there are more applicants from the catchment area than places available at the school, a place will only be offered if your child ranks higher in the oversubscription criteria than other applicants.

Some schools have been unable to admit all applicants from their catchment area for several years and places have been allocated using the distance tiebreaker.

Do I have to put my catchment area school as a preference?

No. However, if you do not list your catchment area school (or schools) your child will not be considered for a place at that/those school(s). Living in the catchment area of a school does not guarantee admission to that school. Equally, it does not mean you must send your child to that school. However, places will not be reserved for your child at your catchment area school. You must list the school as a preference to have your child be considered for admission. If you do not list your catchment area school as one of your preferences, and all places are allocated to those who did list it, your child will not be offered a place at the school (even where we cannot offer any of the schools you do list). You may then be offered a place at a school some distance from your home. As such, we suggest that you consider listing your catchment area school as one of your preferences.

Please note, some home addresses do not have a catchment school. This is because not all secondary schools have catchment as part of their oversubscription criteria.

Will my child get a place at the same school as their sibling(s)?

Most children can attend the same school as their sibling(s). However, there have been cases (in previous years) where out-of-catchment children have not gained entry to the same school as their sibling(s). Please refer to how places were allocated (later in this guide) to see whether that was the case for your preferred school.

You must declare the sibling in the relevant section on the application form.

Can you guarantee we will get one of the preferred schools we name?

No. The law does not guarantee a place at a preferred school. This would lead to overcrowding and pressure on facilities and resources. Although we expect to offer most applicants a place at one of their preferred schools, the likelihood of an offer depends on the schools you list and whether they are oversubscribed. Where a school is oversubscribed, the published oversubscription criteria for

that school will apply. If you are not granted a place at a preferred school, you still have the right of appeal.

I'm not sure if I should include a grammar school as one of my preferences?

If you wish to apply for a grammar, it is important that you list the school as a preference on your local authority application form. Failure to do this will result in your child not being considered for admission at the school, regardless of their score in the entrance test.

Parents must register directly with the schools to sit their entrance tests on the dates specified. Please see dates in the information about the schools later in this guide.

If you decide to include a grammar school as a higher preference, it will not jeopardise your application for other preference schools. All the preferences you list will be considered equally. The School Admissions Team only consider your preference ranking where it is possible to offer a place at more than one preference.

What happens if I move?

Applications can only be processed based on the child's current home address (refer to page 20 for definition). Places at oversubscribed schools cannot be reserved for children moving into the area.

If you have submitted an on-time application and relocate on (or before) the 31 December 2023 (bar Kendrick School and Reading School who have their own dates), you must inform us of your change of address. You will need to submit the details to admissions@brighterfuturesforchildren.org along with evidence that your move has taken place. The evidence we require is proof that contracts have exchanged or a fully signed tenancy agreement. These must show your child will reside at the address, past their entry into secondary school. If you have had a local move or a move within a 20-mile distance, we also require evidence that you have disposed of your previous property, i.e. a copy of the end of tenancy arrangements or proof contracts have exchanged.

What if I do not apply by the deadline because I was not living in the area?

If you move into Reading before 31 December 2023, your application will be treated as an "on time" application. However, you must make it clear to the School Admissions Team that this is the reason for your late application. If you move after this date, your application will be considered as "late" and not processed until the 21 March 2024. Where places are available, your child will be offered a place. However, if your preferred school is oversubscribed, your child's name will be added to the waiting list according to the oversubscription criteria and a place offered at an alternative school.

My child has an Education, Health and Care Plan (EHCP). How do I apply?

Although you will have discussed your child's secondary school placement in their Year 5 annual review, you must complete the SEND application form (available from the SEND Team).

My child doesn't have an EHCP but has special educational needs, how will my application be treated?

Your application will be treated the same as every other application. Some schools do have a medical/ social category as part of their oversubscription criteria. If you wish to be considered under this category, please consult the relevant school's admissions policy, and provide evidence, as required.

How will I know if the School Admissions Team has received my form?

If you apply online, you will receive an automated email to confirm that you have submitted your form.

If you submit a paper form, the School Admissions Team will write to let you know that it has been received. You should receive your letter within 10 school days of submitting the application form. However, this depends on the volume of applications received by the team. If you have not received a response regarding your paper application by 30 November 2023, please contact the School Admissions Team.

Are places allocated on a “first come, first served” basis?

No. However, parents should be aware that the first round of allocations only considers those applications received by the closing date.

What can I do if I am not offered a place at my preferred school(s)?

If you are not offered a place at your preferred school(s) you may:

- appeal to an Independent Appeal Panel against the decision to refuse a place; and accept the alternative place offered.
- ask about the availability of places at other schools.
- keep your child's name on the waiting list.

I don't want to accept the place my child has been allocated. What should I do?

You must accept the allocated place. Doing so will not affect any higher preferences on the application or your right to appeal not getting a higher preference.

However, if you don't want to accept because you are moving out of the borough or have an alternative arrangement in place (e.g. your child will be attending an independent school) you must inform the School Admissions Team of this in writing, providing full details (e.g. where you are moving (with full address) or the name of the independent school).

Can I home educate my child?

If you wish to home educate your child once they are of statutory school age you are entitled to do so. If you decide to do this, you should seek advice and register with Brighter Futures for Children's Elective Home Education Services. Further information is available at:

<https://brighterfuturesforchildren.org/for-parents-carers/schools/elective-home-education/> or telephone 0118 937 3840 (Wednesday to Friday during school terms).

Can my child move to secondary school outside their normal year group?

In exceptional circumstances applications may be received for children who are being taught in a school year group outside that suggested by their age (i.e. offset). Where this arises, the preferred school(s) will consider the individual circumstances of each case. Applications for these children will be processed with all other applications and, subject to approval, these children will be permitted to enter their allocated secondary school.

Applicants should submit their common application form by 31 October 2023. Parents/carers must outline their reasons for the request and supply any supporting documents (e.g. information from

their child's education setting or medical evidence) to the School Admissions Team as soon as possible. The application will then be forwarded to the listed school(s) for consideration.

One admission authority is not required to honour a decision made by another admission authority on admission outside the normal age group. Therefore, you may be required to resubmit supporting evidence.

A child ceases to be of compulsory school age on the last Friday of June in the school year they become 16. This means a child educated outside their normal age group (i.e. offset) throughout their school years, may no longer be of compulsory school age during the school year in which most children take their GCSE examinations and will not be obliged to attend.

Can a place be withdrawn?

Yes – a place can be withdrawn for the following reasons:

- a)** School places are offered on the basis that the information provided on the application form is correct and up to date on National Offer Day. Where incorrect or intentionally misleading information is given, the School Admissions Team may withdraw the offer of a place. The address you give **MUST** be your child's single permanent home address. If you give an incorrect address or do not update us with any change of address, the offer may be withdrawn.
- b)** Where a place has been offered in error, that place may be withdrawn.
- c)** If a parent/carers has not responded to the offer of a place after receiving a reminder, the place offered may be withdrawn.

In all cases, a child would not be without a school. The School Admissions Team will allocate a place based upon a corrected application, which may not include any of the preference schools.

In-Year admissions

In-Year admission is the term used for applications for children who are requiring admission into a year group during the academic year. In secondary school these are Years 7 to 11.

Parents/carers who are seeking admission to a Reading borough school because they have moved to Reading, are new to the UK or simply wish to move their child to another school, must apply to the School Admissions Team by completing an 'In-Year application form'. This form can be completed online. Alternatively, a paper form is available from the School Admissions Team upon request.

If you are a Reading resident, moving into the borough or live outside the borough, you may apply for a school in Reading by completing an In-Year application form.

If you live in Reading and wish to apply for schools in neighbouring authorities, you should apply directly to the appropriate local authority. If you are Reading residents and your child is unplaced and they gain admission at a school outside of Reading, you must inform us of the allocation in writing.

Some schools in Reading coordinate their own In-Year admissions. If you are interested in your child attending Kendrick School, King's Academy Prospect or Reading School, please apply directly to the school. UTC Reading also coordinates its own In-Year admission into Year 10.

If your child is unplaced and you are eligible to apply, an In-Year application should be completed as soon as possible.

More information on In-Year admission can be found at: <https://brighterfuturesforchildren.org/for-parents-carers/schools/in-year/>

Post 16 and Sixth Form Admissions

Applications for places in the sixth form must be made to the school. Places will be offered according to the school's published admission arrangements for Sixth Form Admissions. Please contact the relevant school for further information.

The schools with sixth forms in Reading are:

- Blessed Hugh Faringdon
- Highdown School
- John Madejski Academy
- Kendrick School
- King's Academy Prospect
- Reading School
- The Wren School
- UTC Reading

More information can be found on each school's website.

School transport

Brighter Futures for Children recognises the importance of encouraging sustainable travel to school to improve the safety and health of our children, as well as reducing the levels of traffic on the roads. Individual schools have travel plans setting out how each school intends to encourage children to travel sustainably.

Eligibility for free school transport

It is the local authority where a pupil or student lives - the 'home LA' - that is responsible for any financial help with transport, and not the LA where they attend school or college. This means we can only provide free school transport to eligible Reading borough residents. We cannot provide free school transport to pupils who attend a Reading borough school, but who live outside the borough.

For pupils aged 11-16 years, help with transport will be considered where your child meets one of the following criteria:

- a)** Children who are receiving free school meals or whose parents are receiving the maximum level of working tax credit will be entitled to transport assistance provided that the criteria relating to distance and attendance at an appropriate school are fulfilled. Pupils must be attending one of their three nearest qualifying schools and live more than two miles but less than six miles from that school – or to the nearest school preferred by reason of a parent's religion or belief up to a maximum of 15 miles from the child's home.

Proof of entitlement will need to be made before the start of each academic year.

If benefit entitlement is withdrawn, transport assistance will continue to the end of the academic year and any further entitlement will be based on the general transport policy. Further details available from the Transport Officer.

- b)** They have been allocated a place at the nearest appropriate school, and that school is further than three miles safe walking distance from the home address.
- c)** Where the parents/carers have named the nearest appropriate school as one of their preferences, but a place is not offered because the school is full, Reading School Admissions will divert to the nearest available school with places. In these circumstances transport applications will be considered if the distance between the home and the school is more than three miles by the nearest safe walking route.

Parents must not assume their nearest appropriate area school will be oversubscribed and their child would not get a place and therefore not list the school as a preference.

- d)** They had to change schools outside the normal admission round (i.e. not at the beginning of Year 7) and the school that has been allocated by the LA is further than three miles safe walking distance from the pupil's home.

Unless you qualify under category (a) above the following rules apply to transport provision.

You are not eligible for help with transport if you did not list your nearest appropriate school and your nearest appropriate school became over-subscribed, which meant that your child was allocated a place at a different school.

Walking distance

Walking distance is defined by law for a child who is eight years old, or older, as three miles or 4.828 km, measured by the nearest available safe walking route. This three-mile safe walking route may not be the same as the route driven by a vehicle.

Availability of free school transport if a child does not attend the catchment area school

If you do not send your child to your nearest appropriate school your child will not be eligible for free school transport unless it is not possible to offer a place at your nearest appropriate school and the school allocated is more than three miles from your home.

Free school transport for denominational schools

There is no provision of transport for denominational schools unless meeting the criteria under the low-income policy.

Free school transport for children with special educational needs / EHCP

Some children with Education, Health and Care Plans may also be entitled to assistance. Please note that help with transport costs may not be provided for children if appropriate provision is available at a school that is nearer to their home address.

Availability of school transport if a child attends a grammar school or a partially selective school

Children who attend Kendrick School, Reading School or have a selective stream place at Reading Girls' School are not eligible to receive help with transport unless qualifying under section (a).

Maiden Erlegh Chiltern Edge

The policy for transport to Maiden Erlegh Chiltern Edge is currently being reviewed and any updates on the policy will be available here www.brighterfuturesforchildren.org/for-parents-carers/schools/transport/.

Travelling expenses

We will not normally reimburse travelling expenses. When help is given with school transport, a pass is issued for the child to use on the appropriate bus service.

UTC

Transport applications for UTC Reading are assessed under the mainstream secondary school transport policy. As UTC Reading will not be the nearest available secondary school, unless under the three-mile distance criteria, pupils will only qualify for transport if qualifying under section (a).

Post-16 transport

The company does not provide free post-16 transport.

Reading Buses

A Boost card allows travel at a cheaper rate on Reading and Newbury Buses for pupils up to age 19. Applications can be made online at: www.reading-buses.co.uk or from the Travel Centre in the Broad Street Mall.

Contact details

If you believe you are entitled to transport when a place has been allocated to your child, you should apply online at the Brighter Futures for Children website: <https://brighterfuturesforchildren.org/for-parents-carers/schools/transport/>

For further information regarding the “School Transport Service”, please contact School Transport:

Telephone: 0118 937 2542

Email: school.transport@brighterfuturesforchildren.org

Address: School Transport Service
Brighter Futures for Children
Civic Offices
Bridge Street
Reading
RG1 2LU

Financial assistance, charging and general information

Charging for school activities

No charge may be made for school activities by schools or the school governors unless it is already provided for in a statement of policy on charging and the remission of charges. Such statements will also usually cover arrangements for the financing of school activities by means of voluntary contributions.

Charging for public examinations

No charge will generally be made for public examinations for which pupils are prepared by the school. However, the fee may be recovered if the pupil fails, without good reason, to complete the examination requirements, or if the pupil is required to re-sit an examination.

Free school meals

All schools within the borough of Reading deal with the administration of free school meals for pupils in attendance.

Who is eligible?

Your child may be eligible for free school meals after this time, if you receive any of the following:

- Universal Credit (provided you have an annual net earned income of no more than £7,400, as assessed by earnings from up to three of your most recent assessment periods)
- Income Support
- income-based Jobseekers Allowance
- income-related Employment Support Allowance
- support under part VI of the Immigration and Asylum Act 1999
- Child Tax Credit (provided you are not also entitled to Working Tax Credit and have an annual income of no more than £16,190)
- the guaranteed element of State Pension Credit.

Note: If you are in receipt of Working Tax Credit during the four-week period immediately after your employment ceases, or after you start to work less than 16 hours per week, your child/ children are entitled to free school meals.

Each term, parents/carers must demonstrate they are in receipt of one of the qualifying benefits by showing appropriate current documentary evidence to the school.

For further information and an application form, contact your child's school.

Are free places available at independent schools, or is there help with independent school fees?

There are no free places available at independent schools. Reading has no schemes to help parents/ carers wishing to educate children at independent schools.

School leaving age

A child ceases to be compulsory school age on the last Friday of June in the school year they reach 16 years of age. As such, where a child is educated in the year below their “normal” age group throughout their school life, they will not be of compulsory school age in the school year during which most children take their GCSE examinations (and cannot be obliged to attend). Therefore, if a child is offset, they can choose not to attend year 11 at all should they wish. Should they elect to leave or move to a new house there is no requirement for schools to offer a place to children over statutory school age. The potential impact of leaving education without having sat GCSE's may be a consideration when dealing with these requests. The focus is on the best interest of the child concerned. www.gov.uk/know-when-you-can-leave-school

When can my child leave school?

The Education and Skills Act 2008 increased the minimum age at which young people in England can leave learning. In England, children can leave school on the last Friday in June if they will be 16 by the end of the summer holidays. They must do one of the following until they are 18:

- Stay in full time education, for example at a college
- Start an apprenticeship or traineeship
- Spend 20 hours or more a week working or volunteering while in part-time education or training.

Can I get help with school uniform?

There is no support currently provided. Please contact your child’s current school as they may be aware of support in this area. The Family Information Service (FIS) also has a list of charities that provide grants towards school uniforms (dependent on need and parent carer situation). They can be contacted via the following

Email: fis@reading.gov.uk

Tel: 0118 937 3777, option 2.

Website: www.reading.gov.uk/fis



Special educational needs and disabilities

What are special educational needs (SEND)?

A child has special educational needs and / or disabilities (SEND) if they have greater difficulty in learning than most other children of about the same age. A child's SEND might relate to difficulties with communication and interaction, cognition and learning, social, emotional, and mental health difficulties; or sensory and/or physical needs. Many children experience barriers to learning at some time in their education. These are often short term and support will be put in place by the school, using resources already available to schools.

How can schools help?

Schools receive funding within their budget which they allocate to SEND support, to provide extra help for pupils with SEND. If a child is identified as having SEND, the school can set up an individual support plan which will set targets that are reviewed regularly with you. This may include extra help from a teacher or learning support assistant, or individual or small-group teaching for short periods. The level of help is matched to your child's needs, and you will be kept informed at each stage of the process.

Sometimes, the school will call on the help and advice of other practitioners such as an educational psychologist.

Children with Education, Health and Care Plans (EHCP)

In most cases, schools will ensure that your child gets all the help they need. However, a few children will have more significant and long-term needs. These children may require an assessment of their needs - this may lead to the issue of an EHCP. Most children with an EHCP attend their local school and receive the support highlighted in their plan.

However, a child with an EHCP may need to attend a special school or a mainstream school with additional facilities for particular needs (such as hearing or visual impairment, physical difficulties, autism, learning needs, social emotional and mental health needs or speech, language and communication). If you think your child needs to attend a school with specialist support, you can contact the SEND team. For more information, check the Reading SEND Local Offer on www.reading.gov.uk/servicesguide or contact Reading IASS (Information Advice & Support Service) at <https://www.readingiass.org/>.

Transfer to secondary school

If your child has an EHCP, their future placement must be considered as part of the annual review of the EHCP, and you will be part of those discussions.

Parents will be asked to complete a preference form in September of Year 6. In the majority of cases, it will be possible to meet the parental preference for a named school. However, if you do not agree with the school being suggested, you will be invited to discuss the matter with someone from the SEND team and ultimately will have the right to appeal to the SEND tribunal. The SEND team wish to work with you, so please do contact them to discuss placement.

The Reading SEND Information, Advice & Support Service (IASS) is also available to offer impartial advice and support to parents of children with special educational needs.

Mainstream schooling

Most children will attend their local mainstream school according to their address. However, in cases where children attend a school that is not the nearest school, parents/carers will normally be expected to pay the full cost of the transport costs to the school.

Specialist provision

If your preference is for a place in a resourced unit or special school, this information is passed to the SEND team, if your child has an EHCP, for consideration. If your child does not have an EHCP you will be contacted to advise you that you cannot choose the school. A move to a special school or to a resourced base in a mainstream school can only be considered if the school is suitable to your child's age, aptitude, ability, and their special educational needs.

Schools outside Reading borough

You may express a preference for your child to be placed in a mainstream school, a special school, or to a resourced base attached to a mainstream school outside Reading. The allocation of places in schools outside Reading is arranged with the governing body and the appropriate local authority. The SEND team must, by law, consult the admission authority and the governors of your preferred school. The admission authority may be the local authority that maintains the school. Expressing a preference for a resourced base in a school outside Reading will not necessarily secure the admission of your child to either the school or the resource.

If you live in Reading, you will be notified of how to state your preferences in September. Your preferences will be processed by the SEND team, and you will be informed which school will be named in your child's EHCP on or before 15 February 2024. If you need further advice or information, please contact the SEND Team on 0118 937 2674 or at sen@brighterfuturesforchildren.org.

Independent support

You may also wish to talk to the SEND Information, Advice & Support Service (IASS), which can offer support and provide impartial information to help you be fully involved in your child's education.

Reading IASS: Tel: (0118) 937 3421 or www.readingiass.org

Past allocations 2023

Blessed Hugh Faringdon Catholic School - Admission number 180

Category	Total number of children offered a place on National offer day: 186	
	Children with a statement of special needs or Education, Health and Care Plan naming the school	10
1	Baptised Catholic looked after children or previously looked after children	0
2	Baptised Catholic children	85
3	Other looked after or previously looked after children	0
4	Children who are members of the Eastern Orthodox churches	6
5	Children of families who are members of other Christian denominations	33
6	Children who are members of other faiths	43
7	Any other children – it was not possible to offer all children from this category. Those, with a sibling and living closest to the school, measured as a straight-line distance from home to school, have been offered places. The school offered into subcategory 4, those whose permanent address is nearest to the school. The last place offered was to a child whose home is 0.559 miles from the school data point. <i>It was not possible to offer a place to 64 children from category 7</i>	9

Highdown School - Admission number 250

Category	Total number of children offered a place on National offer day: 250	
	Children with a statement of special needs naming the school and looked after children or previously looked after children	8
2	Services Children	0
3	Children who have strong medical or social grounds for admission	0
4	Children of staff at Highdown School	4
5	Children living in the designated area with a sibling at the school in Years 7 – 11 in September 2023	88
6	Children whose permanent home address is in the designated area – it was not possible to offer all children from this category. Those living closest to the school, measured as a straight-line distance from home to school, have been offered places. The last place offered was to a child whose home is 1.298 miles from the school data point. <i>It was not possible to offer a place to 21 children from category 6</i>	150
7	Children not in the designated area of the school with a sibling at the school in Years 7-11 in September 2023	-
8	Other children.	-

John Madejski Academy - Admission number 180

The school did not receive more applications than the published admissions number and therefore no over subscription criteria was used

Places available on national offer day	3
--	---

Kendrick School - Admission number 128

Total number of children offered a place on National offer day: 128

It was not possible to offer places to all applicants in 'category 4' of the oversubscription criteria. Places within this category have been offered based on performance in the tests.

King's Academy Prospect - Admission number 240

The school did not receive more applications than the published admissions number and therefore no over subscription criteria was used

<i>Places available on national offer day</i>	42
---	-----------

Maiden Erlegh in Reading - Admission number 180

Category	<i>Total number of children offered a place on National offer day: 180</i>	
	Children with a statement of special needs naming the school and looked after children or previously looked after children	1
2	Children who are eligible for Pupil Premium at the time of application	18
3	Children of staff at Maiden Erlegh in Reading	0
4	Children with siblings at the school	31
5	Children attending feeder primary schools	88
6	Other Children - the tie breaker of straight-line distance from home to school was used as it was not possible to offer every child a place in this category. The last child offered a place, lives 1.442 miles from the school's data point. <i>It was not possible to offer a place to 74 children from category 6</i>	42

Reading Girls School - Admission number 180, including 42 selective places

Category	<i>Total number of children offered a place on National offer day: 180</i>	
	Children with a statement of special needs naming the school and Looked After Children or previously Looked After Children	4
2	Up to 42 places may be selected by ability assessed by means of selection tests and ranked according to the results of the tests.	42
Then the remaining places up to 180 will be allocated according to the following criteria:		
3	children on the basis of social or medical need.	0
4	children with siblings at the school.	19
5	children of staff at the school,	0
6	children who attend named feeder schools - Battle Primary Academy.	3
7	Other Children - the tie breaker of straight-line distance from home to school was used as it was not possible to offer every child a place in this category. The last child offered a place lives 2.185 miles from the school's data point. <i>It was not possible to offer a place to 25 children from category 7</i>	112

Reading School - Admission number 138 (Day Places) 12 (Boarding)

Total number of children offered a place on National offer day: 150.

It was not possible to offer places to all day applicants in 'category 4' of the oversubscription criteria. Places within this category have been offered based on performance in the tests.

The Wren School - Admission number 168

Category	Total number of children offered a place on National offer day	
	Children with a statement of special needs naming the school and looked after children or previously looked after children	3
2	Students who have medical grounds for admission	0
3	Children of founders of The Wren School	0
4	Children of Excalibur employees	0
5	Students living in the catchment area, with a sibling attending The Wren School at the time of application	40
6	Students living outside of the catchment area, with a sibling attending The Wren School at the time of application	4
7	Students living in the catchment area - the tie breaker of straight-line distance from home to school was used as it was not possible to offer every child a place in this category. The last child offered a place lives 1.219 miles from the school's data point. <i>It was not possible to offer a place to 57 children from category 7</i>	121
8	Students living outside of catchment area.	-

Past allocations 2022

Blessed Hugh Faringdon Catholic School - Admission number 180

Category	Total number of children offered a place on National offer day: 186	
	Children with a statement of special needs or Education, Health and Care Plan naming the school	14
1	Baptised Catholic looked after children or previously looked after children	1
2	Baptised Catholic children	82
3	Other looked after or previously looked after children	1
4	Children who are members of the Eastern Orthodox churches	2
5	Children of families who are members of other Christian denominations	22
6	Children who are members of other faiths	27
7	Any other children. – it was not possible to offer all children from this category. Those, with a sibling and living closest to the school, measured as a straight-line distance from home to school, have been offered places. The school offered into subcategory 4, those whose permanent address is nearest to the school. The last place offered was to a child whose home is 0.246 miles from the school data point. <i>It was not possible to offer a place to 54 children from category 7</i>	37

Highdown School - Admission number 250

Category	Total number of children offered a place on National offer day: 250	
	Children with a statement of special needs naming the school and looked after children or previously looked after children	9
2	Services Children	0
3	Children who have strong medical or social grounds for admission	2
4	Children of staff at Highdown School	3
5	Children living in the designated area with a sibling at the school in Years 7 – 11 in September 2022	99
6	Children whose permanent home address is in the designated area – it was not possible to offer all children from this category. Those living closest to the school, measured as a straight-line distance from home to school, have been offered places. The last place offered was to a child whose home is 0.962 miles from the school data point. <i>It was not possible to offer a place to 73 children from category 6</i>	137
7	Children not in the designated area of the school with a sibling at the school in Years 7-11 in September 2022	-
8	Other children.	-

John Madejski Academy - Admission number 180

The school did not receive more applications than the published admissions number and therefore no over subscription criteria was used

Places available on national offer day	15
--	----

Kendrick School - Admission number 128

Total number of children offered a place on National offer day: 128

It was not possible to offer places to all applicants in 'category 4' of the oversubscription criteria. Places within this category have been offered based on performance in the tests.

Maiden Erlegh in Reading - Admission number 180

Category	<i>Total number of children offered a place on National offer day: 180</i>	
	Children with a statement of special needs naming the school and looked after children or previously looked after children	2
2	Children who are eligible for Pupil Premium at the time of application	20
3	Children of staff at Maiden Erlegh in Reading	0
4	Children with siblings at the school	43
5	Children attending feeder primary schools	96
6	Other Children - the tie breaker of straight-line distance from home to school was used as it was not possible to offer every child a place in this category. The last child offered a place, lives 1.021 miles from the school's data point. <i>It was not possible to offer a place to 76 children from category 6</i>	17

King's Academy Prospect - Admission number 240

The school did not receive more applications than the published admissions number and therefore no over subscription criteria was used

Places available on national offer day 48

Reading Girls School - Admission number 180, including 42 selective places

The school did not receive more applications than the published admissions number and therefore no over subscription criteria was used

Places available on national offer day 9

Reading School - Admission number 138 (Day Places) 12 (Boarding)

Total number of children offered a place on National offer day: 150.

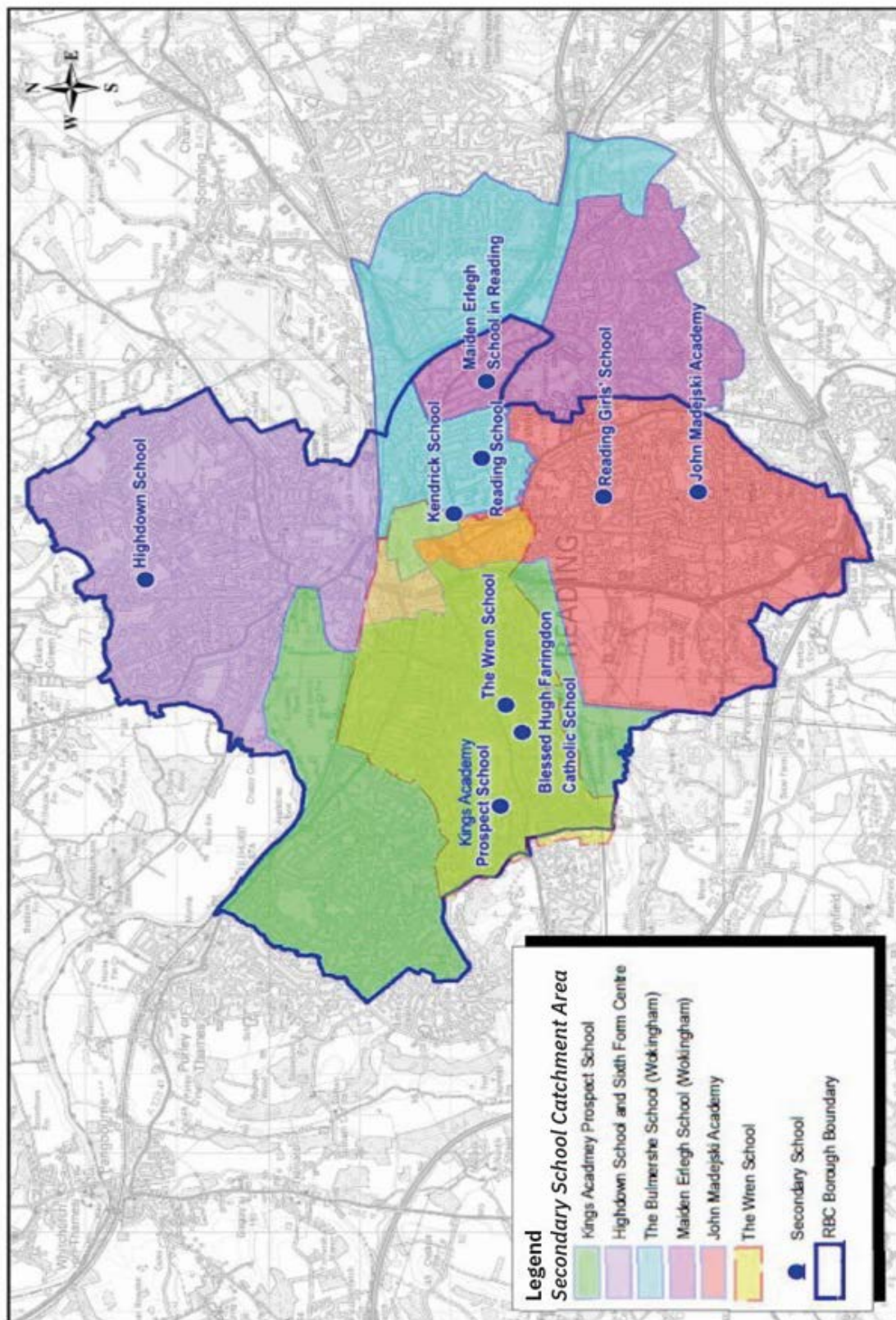
It was not possible to offer places to all day applicants in 'category 4' of the oversubscription criteria. Places within this category have been offered based on performance in the tests.

The Wren School - Admission number 168

Category	<i>Total number of children offered a place on National offer day: 168</i>	
	Children with a statement of special needs naming the school and looked after children or previously looked after children	2
2	Students who have medical grounds for admission	0
3	Children of founders of The Wren School	0
4	Children of Excalibur employees	1
5	Students living in the catchment area, with a sibling attending The Wren School at the time of application	41
6	Students living outside of the catchment area, with a sibling attending The Wren School at the time of application	5
7	Students living in the catchment area- the tie breaker of straight-line distance from home to school was used as it was not possible to offer every child a place in this category. The last child offered a place lives 1.256 miles from the school's data point. <i>It was not possible to offer a place to 35 children from category 7</i>	119
8	Students living outside of catchment area.	-

Map of Reading secondary schools

Map shows school locations and if they have a designated area



Schools

Secondary Schools	Page
Blessed Hugh Faringdon Catholic School	49
Highdown School and Sixth Form Centre	51
John Madejski Academy	53
Kendrick School	55
King's Academy Prospect	57
Maiden Erlegh School in Reading	59
Reading Girls' School	61
Reading School	63
The Wren School	66

Blessed Hugh Faringdon School

ADDRESS:	Fawley Road, Reading, RG30 3EP.
TEL:	0118 957 4730
EMAIL:	admin@hughfaringdon.org
WEBSITE:	www.hughfaringdon.org
HEADTEACHER:	Dr Simon Uttley
SCHOOL TYPE:	Voluntary-Aided, Co-Educational, Comprehensive
AGE RANGE:	11-18 (includes Sixth Form)
DfE NUMBER:	870 5411
ADMISSIONS NUMBER (YEAR7):	180

Blessed Hugh Faringdon Catholic School and Sixth Form Centre is a voluntary-aided school in the Catholic Diocese of Portsmouth. The school was founded by and is part of the Catholic Church and is in the Trusteeship of the Diocese. The school is conducted as a Catholic school in accordance with Canon Law, the teachings of the Catholic Church and the Trust Deed of the Diocese of Portsmouth. It seeks at all times to be a witness to Jesus Christ.

Blessed Hugh Faringdon Catholic School is an inclusive school which offers a Catholic education. It was set up primarily to serve the Catholic community in the Greater Reading area and although Catholic children have priority of admission, the governing body also welcomes applications from those of other denominations and faiths, or none. The school has an Autism Resource with approximately four places available for Year 7. Admission to the Resource takes place under a separate procedure administered by Reading local authority in conjunction with the school. The governors expect that all parents applying for places for their children, including those seeking admission to the Autism Resource, will accept the Catholic ethos of the school.

This school also has a supplementary information form, if applicable, this should be completed as well as the main Common application form this can be obtained here

<https://brighterfuturesforchildren.org/for-parents-carers/schools/secondary-admissions/>

Oversubscription criteria summary

Where the number of applications for admission exceeds 180 and after the admission of pupils with an EHCP, the governors will offer places using the following criteria in the order stated:

Category	
1	Catholic looked after children or Catholic previously looked after children. Evidence of Baptism and adoption (if applicable) will be required
2	Catholic children. Evidence of Baptism in a Catholic Church or a certificate of reception into the full communion of a Catholic Church will be required.
3	Other looked after children and previously looked after children. Evidence of adoption (if applicable) will be required
4	Children who are members of Eastern Christian Churches. Evidence of membership of the church provided by a priest of a designated place of worship will be required
5	Children of families who are members of other Christian denominations. Evidence of membership of the church provided by a priest/ minister of a designated place of worship will be required
6	Children of families who are members of other faiths. Evidence of membership of the faith, provided by a minister/faith leader of a designated place of worship, will be required
7	Any other children.

Priority within the oversubscription criteria

The governors will apply the following order of priorities within any of the above criteria when applications exceed the number of places available, and it is necessary to decide between applications through a priority ranking:

- 1) Social or medical need which make the school particularly suitable for the child in question. STRONG AND RELEVANT EVIDENCE, NAMING THE SCHOOL, MUST BE PROVIDED BY AN APPROPRIATE PROFESSIONAL AUTHORITY (e.g. qualified medical practitioner, education welfare officer, SENCO, senior UK service personnel, social worker, or social care professional). EVIDENCE OF A DIAGNOSIS OR A LETTER FROM A PARENT EXPRESSING A PREFERENCE FOR THE SCHOOL IS NOT SUFFICIENT EVIDENCE.
- 2) Within each oversubscription category above, priority will be given to children with a sibling in the school at the time of application.
- 3) Within each oversubscription category above, priority will be given to those children in attendance at a named Catholic feeder primary school.
- 4) Within each oversubscription category above, priority will be given to the applicant whose permanent home address is nearest to the school. This information on distance is provided by Reading local authority using a computerised system; distances are not measured by the governing body. Evidence of residence may be required.

Please ensure you read the school's full admission policy which can be obtained from its website.

Highdown School and Sixth Form Centre

ADDRESS:	Surley Row, Emmer Green, Reading, RG4 8LR
TEL:	0118 901 5800
EMAIL:	office@highdown.reading.sch.uk
WEBSITE:	www.highdown.reading.sch.uk
HEADTEACHER:	Ms Rachel Cave
SCHOOL TYPE:	Academy, Co-Educational, Comprehensive
AGE RANGE:	11-18 (includes sixth form)
SPECIALISM:	Mathematics and Computing
DfE NUMBER:	870 4020
ADMISSIONS NUMBER (YEAR7):	250

Highdown School and Sixth Form Centre is an 11 – 18 co-educational comprehensive academy with specialist status for mathematics and computing.

Oversubscription criteria summary

If there are more applicants than places available, applications will be prioritised in accordance with the following oversubscription criteria. Children with an Education, Health and Care Plan that names the school will be allocated a place above all other applicants.

Category	
1	Looked after children or previously looked after children. A 'looked after child' or a child who was previously looked after but immediately after being looked after became subject to an adoption, child arrangements, or special guardianship order including those who appear [to the admission authority] to have been in state care outside of England and ceased to be in state care as a result of being adopted. A looked after child is a child who is (a) in the care of a local authority, or (b) being provided with accommodation by a local authority in the exercise of their social services functions (see the definition in Section 22(1) of the Children Act 1989).
2	Services children
3	Children who have strong medical or social grounds for admission
4	To support Highdown staff, their children may access a preferential place after EHCP and services children
5	Children whose permanent home address is in the designated area of the school who has an older sibling(s) who will still be attending the school in Years 8-11 in September 2024
6	Children whose permanent home address is in the designated area of the academy
7	Children who do not live in the designated area who will have an older sibling(s) who will still be attending the academy in Years 8-11 in September 2024
8	Other applicants.

Tiebreaker

If the school does not have enough places for all applicants in a particular category – places will be allocated to those living nearest to the school measured in a straight-line between the data point of the home and the data point of the school. The data point is the unique address point for each property supplied by Ordnance Survey. The distance between the two points is measured using Reading Borough Council's mapping software. The data point for the home and the school can be seen on Reading Borough Council's website. If there is no other way of separating the application according to the admissions criteria and to admit both or all of the children would cause the legal limit to be exceeded, the local authority, on behalf of the governing body, will randomly select the child to be offered the final place by drawing lots.

Please ensure you read the school's full admission policy which can be obtained from its website.

John Madejski Academy

ADDRESS:	125 Hartland Road, Reading, RG2 8AF
TEL:	0118 937 0200
EMAIL:	contact@johnmadejskiacademy.co.uk
WEBSITE:	www.johnmadejskiacademy.co.uk
HEADTEACHER:	Dr Michael Milner
SCHOOL TYPE:	Academy, Co-Educational, Comprehensive
AGE RANGE:	11-18 (includes sixth form)
SPECIALISM:	Sport
DfE NUMBER:	870 6905
ADMISSIONS NUMBER (YEAR7):	180

John Madejski Academy will admit up to 10% of 180 students by reference to aptitude in its chosen specialism - sport. Arrangements for selecting those students will be fair and transparent, building upon expertise gained in applying such tests in other establishments with a sports specialism. The outline arrangements for aptitude testing appear as Appendix 1 in the school's policy. Where appropriate, provided they qualify for selection by aptitude, priority will be given in the allocation of these places to siblings of students in Years 7 to 11, when the student would be admitted and who were previously selected by aptitude. Any applicant, unsuccessful in the selection process, will be considered against the oversubscription criteria set out below. The selection process will be carried out in November/December each year (after the receipt of applications). Parent/carers who wish to apply to the Academy for its chosen specialism, should complete the academy's supplementary form to register for the tests. This can be obtained from the academy.

This school also has a supplementary information form. If applicable, this should be completed, as well as the main Common application form. This can be obtained here, <https://brighterfuturesforchildren.org/for-parents-carers/schools/secondary-admissions/>

Oversubscription criteria summary

Where the number of applications for admission is greater than the published admissions number, applications will be considered against the following criteria:

After the admission of students with statements of Special Educational Needs/EHCP where John Madejski Academy is named on the statement, the criteria will be applied in the order below:

Category	
1	A “looked after child” or a child who was previously looked after but immediately after being looked after became subject to an adoption, child arrangements, or special guardianship order (90) including those who appear (to the admission authority) to have been in state care outside of England and ceased to be in state care as a result of being adopted. A looked after child is a child who is (a) in the care of a local authority, or (b) being provided with accommodation by a local authority in the exercise of their social services function (see the definition in Section 22(1) of the Children Act 1989)
The John Madejski Academy admits up to 10% of 180 (18 pupils) each year by reference to aptitude in its chosen specialism – sport. Arrangements for selecting those pupils will be fair and transparent, building upon expertise gained in applying such tests in other establishments with a sports specialism. Priority for those places will be as follows:	
2	Students applying for the sports specialism will undertake a series of tests to determine their aptitude in sport and will enter the Gifted and Talented Programme. Tests will include assessments of strength, agility, balance, flexibility, speed, co-ordination, reaction time, cardiovascular efficiency. Tests will be moderated according to the physical profile of each student. Priority in this category will be given to applicants who have the best performance scores. (Please complete JMA Sport supplementary form)
3	Any child of a member of staff employed by The White Horse Federation for two or more years at the time of application for admission to the school is made, and/or who were recruited to fill a vacant post where there is a demonstrable skill shortage. The family unit must live within the local authority area for the school being applied for. This includes stepchildren, foster children and children of co-habiting partners. (Please complete JMA Staff supplementary form)
4	Pupils whose home address falls within the designated area for the school whose siblings currently attend JMA and who will continue to do so in September 2024 in Years 7-11.
5	Pupils living within the designated area for the school.
6	Pupils not living in the designated area and whose siblings currently attend JMA and who will continue to do so in September 2024 in Years 7-11.
7	Children other than those falling into priority 1-6 above.

Decider

Priority within each category will be determined by distance from the school to home address.

Reading School Admissions Team measure the straight-line distance from the home to the school using Ordnance Survey data points of the home and the school using computerised software from Reading Borough Council. Every address has a unique data point which is determined by the Eastings and Northings. This point can be anywhere on the property. This distance created is given in miles to three decimal points.

Please ensure you read the school’s full admission policy which can be obtained from its website.

Kendrick School

ADDRESS:	London Road, Reading, RG1 5BN
TEL:	0118 901 5859
EMAIL:	admin@kendrick.reading.sch.uk
WEBSITE:	www.kendrick.reading.sch.uk
HEADTEACHER:	Ms Christine Kattirtzi
SCHOOL TYPE:	Academy Grammar School (selective) Single Sex Girls School
AGE RANGE:	11-18 (includes sixth form)
SPECIALISM:	Science, Mathematics and Language
DfE NUMBER:	870 5413
ADMISSIONS NUMBER (YEAR7):	128

Kendrick School is a selective girls' school with academy status and therefore is its own admissions authority.

Application for a place

The admissions process for routine admission into Year 7 of a secondary school in 2024 (the routine admission round) begins in May 2023 and ends on 31 August 2024. For entry in September 2024 a girl's date of birth would normally fall on or between 1 September 2012 and 31 August 2013 and she must be working in Year 6 at the time of testing. Applications must be made on the appropriate local authority (LA) Common Application Form (CAF). In addition, a separate application (to register for the Admission Test) must be made directly to Kendrick School.

Parents/carers must have registered for the Kendrick School Admission Test by completing the online registration form available on the school website from 1 May 2023. The deadline for registering for the Admission Tests for entry into Year 7 in September 2024 was Saturday 1 July 2023 (midnight). Late applications will only be accepted in exceptional circumstances.

For Entry 2025

Registration opens on 1 May 2024 and closes in mid-June 2024 (date to be confirmed in the 2025 admission policy). Please contact the school for full details.

Oversubscription criteria summary

Applicants will be ranked according to their performance in the tests. A qualifying score will be determined (to two decimal places) for candidates in categories 3-6 of the oversubscription criteria below. **A qualifying score of five points lower than this score will be applied for candidates in categories 1 and 2 of the oversubscription criteria below (Pupil Premium/Service Premium/Child in Care).**

Oversubscription criteria will be applied if there are more applicants achieving the qualifying score than the 128 places available. Offers will be made from the ranked list in the following order and within each category:

Category	
1	The applicant is a looked after child or previously looked after child.
2	The permanent home address of the applicant is within Priority Area 1 or 2 of the designated area of the school on 31 August 2023 and they should still be living there at the time of admission to the school and the applicant is in receipt of Pupil Premium or Service Premium . Documentary evidence, or confirmation from the applicant's current primary school that the child is in receipt of Pupil Premium or Service Premium will be required.
Offers will then be made from the ranked list, according to the ranked order until up to 75% (96) of places have been offered:	
3	The permanent home address of the applicant is within Priority Area 1 or 2 of the designated area of the school and is the permanent home address of the parent(s)/carer(s) and the applicant on 31 August 2023 and they should still be living there at the time of admission to the school .
The remaining 25% (32) places will be offered in the following order, according to the ranked order until all places in total have been offered:	
4	The permanent home address of the applicant is within Priority Area 1 of the designated area and this home address is the permanent home address of the parent(s)/carer(s) and the applicant on 31 August 2023 and they should still be living there at the time of admission to the school .
5	The permanent home address of the applicant is within the Priority Area 2 of the designated area and this home address is the address of the parent(s)/carer(s) and the applicant on 31 August 2023 and they should still be living there at the time of admission to the school .
6	Applicants whose permanent home address is NOT in the designated area of the school.

Note: in Category 1 above, any such an applicant, provided she has achieved the lower qualifying score, will be offered a place even if she is not ranked in the top 128 places. In Category 2 above, any such applicant, provided she has achieved the lower qualifying score and her permanent home address is within **Priority Area 1 or 2** of the designated area of the school, will be offered a place even if she is not ranked in the top 128 places. The total number of places offered will remain, however, at 128.

The tie-break situation

The following criterion will be used to rank applicants on the waiting list who cannot be distinguished by their performance in the Admission Test, i.e. all those achieving **exactly** the same overall score in the tests:

- Eligible applicants living nearest to Kendrick School and within the designated area will be accorded the highest priority in the allocation of places. Distance will be from the home address to the front gate of the school. It will be calculated using grid references and online digital mapping software. Applicants living nearer to the school yet outside the designated area will be ranked after those living within the designated area. For those living equidistant from the school, an independent person will supervise random allocation. In the case of Kendrick School, this will be Reading local authority.

Please ensure you read the school's full admission policy which can be obtained from its website.

King's Academy Prospect

ADDRESS:	Cockney Hill, Reading, RG30 4EX
TEL:	0118 959 0466
EMAIL:	enquiries@prospect.reading.sch.uk
WEBSITE:	www.kgaprospect.uk
HEADTEACHER:	Mr David Littlemore
SCHOOL TYPE:	Academy, Co-Educational Comprehensive
AGE RANGE:	11-18 (includes Sixth Form)
DfE NUMBER:	870 5410
ADMISSIONS NUMBER (YEAR7):	240

As part of the King's Group Academies Trust, King's Academy Prospect is a large, diverse, and inclusive school, rightly proud of our students, who we welcome from a wide range of backgrounds. We enable all our students, whatever their ability, background, or heritage, to make excellent progress and achieve more than they believe to be possible. Our core values of 'Aspire, Believe, Achieve' are at the heart of everything we do, preparing our young people to be successful, fulfilled, and great assets to their community in whatever they choose to do in the future.

Oversubscription criteria summary

The following criteria will be applied if there are more applicants than places available. Priority for places will be given according to the following criteria:

Category	
1	Children with an Education, Health and Care Plan will be allocated a place above all other applicants
2	Children in the care of a local authority where the corporate parent names King's Academy Prospect. (LAC) Children who were looked after but ceased to be so because they were adopted (or became subject to a residency order) immediately after they had been looked after providing appropriate evidence is submitted. Confirmation is required from the local authority, that last looked after the child, that the child was looked after immediately prior to the issuing of one of the following orders: <ul style="list-style-type: none">• These are children adopted under the Adoption Act 1976 (section 12) and children adopted under the Adoption and Children's Act 2002 (section 46).• The Children and Families Act 2014 amended the Children Act 1989 and replaces residence orders with child arrangement orders.
3	Children who have strong medical or social grounds for admission
4	Children whose permanent home address is in the designated area of the school who have a sibling at the school at the time of application
5	Children whose permanent home address is in the designated area of the school
6	Children whose permanent home address is NOT in the designated area of the school who have a sibling at the school at the time of application
7	Other children.

Tiebreaker

If the school does not have enough places for all applicants in a particular category – places will be allocated to those living nearest to the school measured in a straight-line between the data point of the home and the data point of the school. The data point is the unique address point supplied by Ordnance Survey and measured using Reading Borough Council's mapping software. The data point for the home and the school can be seen on Reading Borough Council's website.

Please ensure you read the school's full admission policy which can be obtained from its website.

Maiden Erlegh School in Reading

ADDRESS:	81 Crescent Road, Reading, RG1 5SL
TEL:	0118 966 8065
EMAIL:	MERoffice@maidenerleghtrust.org
WEBSITE:	www.maidenerleghschoolreading.co.uk
HEADTEACHER:	Mr Will Graham
SCHOOL TYPE:	Academy, Part of Maiden Erlegh Trust, Co- Educational Comprehensive
AGE RANGE:	11-16
SPECIALISM:	Science, Mathematics and Language
DfE NUMBER:	870 4001
ADMISSIONS NUMBER (YEAR7):	180

Maiden Erlegh School in Reading is an 11–16 co-educational all-ability secondary school and this document details the policy to be followed for admissions to Maiden Erlegh School in Reading. It is committed to straightforward, open, fair, and transparent admissions arrangements. The school will act fully in accordance with the School Admissions Code, the School Admissions Appeals Code and admissions law as they apply to academies.

If you are selecting one of the Maiden Erlegh Trust schools (Maiden Erlegh School [Wokingham], Maiden Erlegh School in Reading or Maiden Erlegh Chiltern Edge), it is important that you list the correct one. When selecting this school on the CAF you must state Maiden Erlegh School in Reading. If you list only “Maiden Erlegh School” we will assume you mean the Maiden Erlegh School in Wokingham.

This school also has a supplementary information form, if applicable. This should be completed as well as the main Common application form, which can be obtained here <https://brighterfuturesforchildren.org/for-parents-carers/schools/secondary-admissions/>

Oversubscription criteria summary

If there are more applicants than places available, and after the admission of children with a statement of Special Educational Needs or Education, Health and Care (EHC) plan, that names Maiden Erlegh School in Reading, applications will be prioritised in accordance with the following oversubscription criteria:

Category	
1	Looked after children or children who were looked after
2	Children who are eligible for the Pupil Premium at the time of the closing date for applications (31 October 2023).
3	The children of staff at Maiden Erlegh Trust whose main place of work is Maiden Erlegh School in Reading at the time of the closing date for applications, where that member of staff is the legal parent or guardian of that child, has a permanent contract to work at the school and where that member of staff has been employed at the school for two or more consecutive years at the time of the closing date for applications or the member of staff is recruited to fill a post for which there is a demonstrable skill shortage. The skills shortage area will be determined by the Maiden Erlegh Trust by 1 July of the year of application and made available on the school website.
4	Children who have a sibling at the school at the time of application, who is expected to be attending the school when the child will enter the school
5	Children who attend the following primary schools - Alfred Sutton, Earley St Peter's CE, Katesgrove, New Town, New Christ Church, Redlands , St John's
6	Any other children.

In order to be considered within oversubscription point two, a Supplementary Information Sheet must be completed confirming your child's eligibility for pupil premium. The school will not consider applications under this over subscription criteria unless this form is completed.

Tiebreaker

Where there are more applications in one criterion than places available, the following tiebreaker will be applied to decide which of the applicants can be offered places, and the waiting list order.

Priority will be given within any of the above oversubscription criteria to the applicant whose permanent home address is nearest to the midpoint of the junction of Hamilton Road and Bulmershe Road (the data point to be used is Easting 473698 Northing 172442) in terms of radial (straight line) distance. Distances will be measured consistently as the straight-line distance from the home to the data point using the Ordnance Survey data points of the home and the school using computerised software of Reading Borough Council. Every address has a unique data point which is determined by the Easting and Northing. This point can be anywhere on the property. The distance created using this software is calculated using Pythagoras' Theorem and may not be exactly the same as that created with a GIS product as the GIS product may build in a formula to allow for the curvature of the earth. The way in which it is done is to calculate the distance in metres between the Eastings and Northings for each end point then multiply by 0.000621317 to convert to miles.

Please ensure you read the school's full admission policy which can be obtained from its website.

Reading Girls' School

ADDRESS:	Northumberland Avenue, Reading, RG2 7PY
TEL:	0118 986 1336
EMAIL:	admin@readinggirlsschool.net
WEBSITE:	www.readinggirlsschool.co.uk
HEADTEACHER:	Ms Marika Farrugia
SCHOOL TYPE:	Academy, (with partial selection) Single Sex Girls School
AGE RANGE:	11-16
DfE NUMBER:	870 4003
ADMISSIONS NUMBER (YEAR7):	180 including 42 selective places.

Reading Girls' School is open to girls of all abilities. Within the current planned admission number of 180, up to 42 pupils will be admitted each year by ability. Girls will be identified for this group by means of appropriate tests.

Selection and banding (optional)

As a partially selective school, we have 42 places available each year for our Selective Stream. The application is direct to the school via registration on the school website:

<https://www.readinggirlsschool.co.uk/page/?title=Selective+Stream+Test&pid=151>.

Testing for the Selective Stream will take place at the school on Saturday 14 October 2023 (unless advised differently). The test is the CEM Select 11+ Entrance Test. You will be informed by the school about the results of the test by letter sent before 31 October 2023.

Oversubscription criteria summary

All children whose statement of special educational needs (SEN) or Education, Health and Care (EHC) plan names the school will be admitted before any other places are allocated.

The criteria for admissions, which are only applied when there are more applications than places, are:

Category	
1	Highest priority will be given to looked after children and all previously looked after children who apply for a place at the school.
2	Up to 42 places may be selected by ability assessed by means of selection tests and ranked according to the results of the tests.
Then the remaining places up to 180 will be allocated according to the following criteria:	
3	Priority will next be given to children on the basis of social or medical need. The school will largely be led by the recommendations from medical practitioners in identifying social and medical needs. If you are making an application on the basis of social or medical need the school requires supporting evidence. The application must be fully supported by written confirmation from the professional involved in the case, which states that Reading Girls' School is in their professional opinion the appropriate school for the pupil to attend for specific medical or social reasons.
4	Priority will next be given to children with siblings at the school. Siblings include step siblings, foster siblings, adopted siblings and other children living permanently at the same address. Priority will not be given to children with siblings who are former pupils of the school.
5	Priority will next be given to children of staff at the school, in either of the following circumstances: a) The member of staff has been employed at the school for two or more years at the time at which the application for admission to the school is made, or b) The member of staff is recruited to fill a vacant post for which there is a demonstrable skill shortage.
6	Priority will next be given to children who attend named feeder schools. Our named feeder school is Battle Primary Academy.
7	Girls living nearest the school being accorded priority, as measured in a straight line from the school to the home address. Distance is measured on the straight line between Ordnance Survey data points for the home address and the school using Reading Borough Council's digital mapping software.

Tiebreaker

In the case of two or more applications that cannot be separated by the oversubscription criteria outlined above, the school will use the distance between the school and a child's home as a tie breaker to decide between applicants. Priority will be given to children who live closest to the school. Distance will be measured in a straight line from the child's home address to the school's front gates on Northumberland Avenue. A child's home address will be considered to be where she is resident for the majority of nights in a normal school week.

Please ensure you read the school's full admission policy which can be obtained from its website.

Reading School

ADDRESS:	Erleigh Road, Reading, RG1 5LW
TEL:	0118 901 5600
EMAIL:	admissions@reading-school.co.uk
WEBSITE:	www.reading-school.co.uk
HEADTEACHER:	Mr Ashley Robson
SCHOOL TYPE:	Academy Grammar School – Day and Boarding, (Selective) Single Sex Boys School.
AGE RANGE:	11-18 (includes Sixth Form)
DfE NUMBER:	870 5401
ADMISSIONS NUMBER (YEAR7):	150 (138 day places and 12 boarding places)

Reading School is a grammar school and is permitted to select the entire intake based on academic ability. To be considered for admission to the school all applicants must take the entrance tests set by the school as the results will be used to allocate the places.

Application for a place

The admissions process for routine admission into Year 7 of a secondary school in 2024 (the routine admission round) begins in May 2023 and ends on 31 August 2024.

For entry in September 2024 a boy's date of birth would normally fall on or between 1 September 2012 and 31 August 2013 and he must be working in Year 6 at the time of testing.

Applications must be made on the appropriate local authority (LA) Common Application Form (CAF). In addition, a separate application to register for the entrance tests must be made directly to Reading School for all year groups and submitted by the date specified in their admissions policy.

Parents/carers must have registered for the Reading School Admission Test by completing the online registration form available on the school website from 1 May 2023. The deadline for registering for the Admission Tests for entry into Year 7 in September 2024 was 30 June 2023 (midnight). Late applications will only be accepted in exceptional circumstances.

For Entry 2025

Registration opens on 1 May 2024 and closes on 30 June 2024 (date to be confirmed in the 2025 admission policy). Please contact the school for full details.

Children with an Education, Health and Care Plan (EHCP) who meet the academic entrance requirements of the school and name Reading School on the CAF will be offered a place.

Oversubscription criteria summary – Day Applications

An eligible score is no guarantee of a place at Reading School, as places are likely to be oversubscribed. In the case of oversubscription, the following criteria will be applied until the Published Admissions Number is complete:

Category	
1	(Previously) Looked after children and/or children previously in care outside of England with a score up to five marks below an eligible score
2	Children with Pupil or Service Premium living within the catchment area with a score up to five marks below an eligible score.
3	15 places for children who have demonstrated aptitude in sport, who live within the catchment area or who have applied for a boarding place, (by achieving a score in the Sporting Aptitude Assessment above the threshold) by rank order of performance in the sporting aptitude assessments.
4	Children whose permanent home address is within the catchment area.
5	Children whose permanent home address is NOT within the catchment area.

Evidence of all the above will need to be submitted and approved in order for a child to be admitted.

Tiebreaker

In the event of standardised scores being tied for two or more candidates and where admission would exceed the PAN, the final rank order will be determined using performance in the Creative Writing element.

Where this still leads to a tie break situation the following criterion will be used to allocate places as between borderline candidates who cannot be distinguished in terms of academic ability. With regard to the historic links with the borough of Reading, eligible boys living nearer to the school will be accorded a higher priority in the allocation of day-boy places. Distance is measured on the straight line between Ordnance Survey data points for the home address and the school using Reading Borough Council's digital mapping software. For those living equidistant from the school, an independent person will supervise random allocation. In the case of Reading School, this will be Reading local authority.

Oversubscription criteria summary – Boarding Applications

An eligible score is no guarantee of a place at Reading School, as places are likely to be oversubscribed. In the case of oversubscription, the following criteria will be applied until the Published Admissions Number is complete:

Category	
1	(Previously) Looked after children and/or children previously in care outside of England with a score up to five marks below an eligible score.
2	Children with Pupil or Service Premium with a score up to five marks below an eligible score.
3	Children with a boarding need.
4	15 places for children who have demonstrated aptitude in sport, who live within the catchment area or who have applied for a boarding place, (by achieving a score in the Sporting Aptitude Assessment above the threshold) by rank order of performance in the sporting aptitude assessments.
5	All other candidates.

Tiebreaker

In the event of standardised scores being tied for two or more candidates and where admission would exceed the PAN, the final rank order will be determined using performance in the Creative Writing element.

Where this still leads to a tie break situation, an independent person will supervise random allocation. In the case of Reading School, this will be Reading local authority.

Please ensure you read the school's full admission policy which can be obtained from its website.

The Wren School

ADDRESS:	61-63 Bath Road, Reading, RG30 2BB
TEL:	0118 214 3888
EMAIL:	admin@wren.excalibur.org.uk
WEBSITE:	www.wrenschool.org
HEADTEACHER:	Mr John Salberg
SCHOOL TYPE:	Academy Free School Co – Educational Comprehensive
AGE RANGE:	11-18 (includes Sixth Form)
DfE NUMBER:	870 4002
ADMISSIONS NUMBER (YEAR7):	168

The Wren School is a publicly funded, co-educational, secondary Free School, with sixth form, established by The Wren School Academy Trust in 2015, which joined the Excalibur Academies Trust on 1 February 2019. The Wren was created to serve the families of central west Reading, and so the data point for the school is at Yeomanry House, Castle Hill, and not the school. Being a popular and successful school with a Good Ofsted report, demand for places is very high, and the school has been oversubscribed within catchment in recent years. The school aims to provide a curriculum that challenges and nurtures the academic and personal development of its students who are drawn from a multi-cultural and socially diverse catchment area.

The data point (or Nodal point) for The Wren School is Yeomanry House, Castle Hill, NOT the school.

Oversubscription criteria summary

The criteria are listed below in the priority order applied to applications when there are more applications than available places.

Applications will be considered by category as listed below. Within each category, applications will be ranked according to the straight-line distance from the academy's data point (or Nodal point), (Yeomanry House) to the home address data point. All data points are supplied by Ordnance Survey and the distances between these are measured using RBC's mapping software. Priority in each category will be given to the shortest distance. In case of the distance being the same a Tie Breaker will be used (see below).

Children with an Education, Health and Care Plan (EHCP) - All children whose Education, Health Care Plan that names The Wren School must be admitted.

Category	
1	Looked after children or a child who was previously looked after but immediately after being looked after became subject to an adoption, child arrangements, or special guardianship order, including those who appear to the admission authority to have been in state care outside of England and ceased to be in state care as a result of being adopted.
2	Children who have exceptional social or medical needs, supported by a written recommendation from the child's paediatrician/consultant, general practitioner, or specialist to show that it would be detrimental to the child not to be admitted to the preferred academy. The letter must explain why the school is the only suitable school to meet the child's needs and why no other school could provide the appropriate support for the child. All supporting evidence should accompany the original application.
3	The Founders of The Wren School have successfully applied to the Secretary of State for derogation from the school admissions code giving priority in the oversubscription criteria to their children. This is limited to the individuals who played a major role in establishing the school, during the application and pre-opening stages, and have continued to play a significant role in the running of the school. A list of relevant Founders is available from the school on request.
4	Children of Excalibur employees employed at the academy on a permanent, minimum 40% Full Time Equivalent contract with the trust for two or more years at the time at which the application for admission is made or who have been recruited to fill a vacant post for which there is a demonstrable skill shortage.
5	Students living in the catchment area, with a sibling attending the Wren school at the time of application.
6	Students living outside of the catchment area, with a sibling attending the Wren school at the time of application.
7	Students living in the catchment area.
8	Students living outside of catchment area.

Please ensure you read the school's full admission policy which can be obtained from its website.

River Academy, proposed opening September 2024 (subject to consultation and Department for Education approval).

Updates on progress can be found at www.river-academy.co.uk

ADDRESS:	7 Richfield Avenue, Reading, RG1 8QE
TEL:	0118 929 6020
EMAIL:	river@maidenerleghtrust.org
WEBSITE:	www.river-academy.co.uk
HEADTEACHER:	Mr Andy Hartley
SCHOOL TYPE:	Academy, Part of Maiden Erlegh Trust, Co- Educational Comprehensive
AGE RANGE:	11-18 (Will open in Sept 24 Year 7 only)
DfE NUMBER:	TBC
ADMISSIONS NUMBER (YEAR7):	TBC

The Maiden Erlegh Trust is incredibly proud to be opening this exciting new secondary school, benefiting from a multi-million-pound building programme and state-of-the-art facilities. When open we will provide a fantastic and enriching environment for teaching and learning, student care and support; a place for students to thrive and succeed.

When full, River Academy will cater for 1,500 students between the ages of 11 and 18, of all abilities and backgrounds. As Maiden Erlegh Trust, we have a strong track record of running high achieving, inclusive and vibrant schools and supporting talented and highly qualified education professionals at all stages of their career. River Academy will join a community of schools ranging from primary to sixth form, and from mainstream to special and alternative provision. The school and its students will benefit from our wealth of experience, skill, and enthusiasm, while at the same time carving out its own unique identity.

Application process

Brighter Futures for Children (Reading School Admissions) will be coordinating admissions on behalf of River Academy outside the normal local authority process for co-ordinating school offers. You will need to complete the River Academy application form (in addition to your home local authority common application form) and return it to Brighter Futures for Children.

Applications for this school should be sent to school admissions at the following address: School Admissions, Brighter Futures for Children, Reading Borough Council using the email address: admissions@brighterfuturesforchildren.org. Brighter Futures will be coordinating admissions on behalf of the Trust.

The closing date for applications is 31 October 2023.

Offers will be made on 1 March 2024. If the school has not entered into a funding agreement with the Secretary of State opening the school by that date, they will be conditional offers and will be confirmed once we have a signed funding agreement.

The application form can be obtained from Brighter Futures for Children <https://brighterfuturesforchildren.org/for-parents-carers/schools/secondary-admissions> or from the River Academy website www.river-academy.co.uk.

Oversubscription criteria summary

Category	
1	Looked after children and children who were previously looked after but immediately after being looked after became subject to adoption, a child arrangements order, or special guardianship order as well as children who appeal (to the admission authority) to have been in state care outside of England and ceased to be in state care as a result of being adopted.
2	Priority will next be given to children eligible for the Pupil Premium. Evidence of eligibility will need to be submitted with the application. See notes on the school's policy on eligibility
3	Children of staff who have been recruited to fill a skill-shortage area.
4	Siblings of pupils attending the school at the time the application is received (where an older sibling is in Year 11, siblings will not be prioritised under this criterion).
5	Other children.

If in categories 2-5 above, a tie-break is necessary to determine which child is admitted, the child living closest to the school will be given priority for admission. Distance is measured from the child's home to the front gates of the school in a straight line.

Please ensure you read the school's full admission policy which can be obtained from its website.

Schools in other local authorities

If you live in the borough of Reading you can apply for any state schools in any local authority (LA), on the Reading Application form. You should not submit an additional form to other local authorities as applications need only be made to a child's home local authority, regardless of which local authority the preferred school is located in. Information on the admissions arrangements and open days/evenings for all schools is available from the relevant LA.

Listed below are details of some state funded secondary schools in neighbouring local authorities where Reading residents have applied for places previously. This list is not exhaustive, and more information will be available from / on the relevant local authority's website.

Wokingham Borough Council

Web: <https://www.wokingham.gov.uk/schools-and-education/school-admissions/starting-and-applying-secondary-school-age-11>

Maiden Erlegh School - (Wokingham)	Off Silverdale Road, Earley, Reading, RG6 7HS (Co-Educational)
The Bulmershe School	Woodlands Avenue, Woodley, Reading, RG5 3EU (Co-Educational)
The Forest School	Winnersh, Wokingham, RG41 5NE (Boys School)
The Holt School	Holt Lane, Wokingham, Berkshire, RG41 1EE (Girls School) Has a Co-Educational sixth form
Oakbank School	Hyde End Lane, Spencers Wood, Reading, RG7 1ER (Co-Educational)
The Piggott School	Twyford Road, Wargrave, Reading, RG10 8DS (Church of England, Co-Educational)
Waingels College	Waingels Road, Woodley, Reading, RG5 4RF (Co-Educational)
Bohunt School	Sheerlands Road, Arborfield, RG2 9GB. (Co-Educational)
Emmbrook School	Emmbrook Road, Wokingham, RG41 1JP (Co-Educational)
St Crispin's School	London Road, Wokingham, RG40 1SS (Co-Educational)

West Berkshire Council

Web: <https://www.westberks.gov.uk/secondary-school-admissions>

Denefield School	Long Lane, Tilehurst, RG31 6XY (Foundation – Co-Educational)
Little Heath School	Little Heath Road, Tilehurst, RG31 5TY (Voluntary-aided Co-Educational)
Theale Green School	Church Street, Theale, RG7 5DA (Academy – Co-Educational)
The Willink School	School Lane, Burghfield Common, Reading, RG7 3XJ (Academy – Co-Educational)

Oxfordshire County Council

Web: <https://www.oxfordshire.gov.uk/residents/schools/apply-school-place/year-7-applications>

Maiden Erlegh Chiltern Edge School	Reade's Lane, Sonning Common, Reading, RG4 9LN (Co-Educational)
Gillotts School	Gillotts Lane, Henley on Thames, RG9 1PS (Co-Educational)
Langtree School	Woodcote, Reading, RG8 0RA (Co-Educational)

UTC and Studio Schools

University Technical Colleges (UTCs) and Studio Schools are state-funded educational establishments that offer places to children from Year 10 to Year 13. They offer a more science-focused and vocational curriculum than many other state-funded schools.

Reading School Admission do not co-ordinate applications for UTC/Studio Schools. If you are interested in applying for Year 10 transfer you should visit the relevant establishment's website (see below) where information can be found on how to apply, when to apply and when applicants will be notified about the outcome of applications.

UTC Reading

ADDRESS:	Crescent Road, Reading, RG1 5RQ
TEL:	0118 938 1020
EMAIL:	enquiries@utcreading.org.uk
WEBSITE:	www.utcreading.co.uk
SCHOOL TYPE:	University Technical College, Academy, Co – Educational, Comprehensive
AGE RANGE:	14-19
SPECIALISM:	Computer Science and Engineering
DfE NUMBER:	870 4000

UTC Oxfordshire

ADDRESS	Greenwood Way, Harwell, Didcot OX11 6BZ
TEL:	01235 391587
WEBSITE:	www.utcoxfordshire.org.uk
SCHOOL TYPE:	University Technical College, Academy, Co – Educational, Comprehensive
AGE RANGE:	14-19
SPECIALISM:	Science/Engineering
DfE NUMBER:	931 4008

Futures Institute Banbury

ADDRESS	Ruskin Road, Banbury, OX16 9HY
TEL:	01295 257942
WEBSITE:	www.futuresbanbury.org
SCHOOL TYPE:	Co-educational, Non-Selective
AGE RANGE:	14-19
DfE NUMBER:	931 4006

Useful numbers and contacts

School Admissions Team	0118 937 3777 (option 1) admissions@brighterfuturesforchildren.org
Reading Family Information Service	0118 937 3777 (option 2) fis@reading.gov.uk
Education / Complaints Helpline	0118 937 2905 complaints@reading.gov.uk
Clerk to the Appeal Panel	0118 937 2532
Special Educational Needs Helpline	0118 937 2674 sen@brighterfuturesforchildren.org
School Transport Service	0118 937 2542 School.transport@brighterfuturesforchildren.org
Reading Information, Advice & Support Service for SEND	0118 937 3242 iass@reading.org.uk

Other local authorities contact information

Local authority	
Bracknell Forest Borough Council	01344 354 023 School.admissions@bracknell-forest.gov.uk
Buckinghamshire County Council	01296 395 000 admissions@buckscc.gov.uk
Hampshire County Council	0300 555 1377 Admissions.team@hants.gov.uk
Oxfordshire County Council (South Division)	0345 241 2487 Admissions.school@oxfordshire.gov.uk
Royal Borough of Windsor & Maidenhead Council	01628 683800 Rbwm.admissions@achievingforchildren.org.uk
Slough Borough Council	01753 475111 admissionshelpline@slough.gov.uk
West Berkshire Council	01635 551111 admissions@westberks.gov.uk
Wokingham Borough Council	0118 974 6000 admissions@wokingham.gov.uk

Other useful telephone numbers

Independent Schools Council (ISC)	020 7766 7070
Local Government Ombudsman – Advice Line	0300 061 0614
Diocese of Oxford – Board of Education	01865 208 200
Catholic Diocese of Portsmouth	01329 835 363

Useful websites

Brighter Futures for Children	www.brighterfuturesforchildren.org Schools' information is under the parent/carers section > schools
Reading Borough Council	www.reading.gov.uk
DfE (Department for Education)	www.education.gov.uk
Ofsted (The Office for Standards in Education)	www.ofsted.gov.uk
Qualifications and Curriculum Authority	www.qca.org.uk
National Curriculum Information	www.gov.uk/national-curriculum/overview
GOV.UK	www.gov.uk
ACE (Advisory Centre for Education)	www.ace-ed.org.uk

Every effort has been taken to ensure the information in this guide is correct at the time of going to press, but some details may be subject to change.

School Admissions Team, Brighter Futures for Children, Civic Offices, Bridge Street, Reading, RG1 2LU.

Tel: 0118 937 3777

Email: admissions@brighterfuturesforchildren.org

**Brighter
Futures for
Children**



School Admissions Team,
Brighter Futures for Children
Civic Offices,
Bridge Street
Reading
RG1 2LU

admissions@brighterfuturesforchildren.org

0118 937 3777

© Brighter Futures for Children 2023
V1.0